



**Review Article**

**Modern Immunotherapy of Adult B-Lineage Acute Lymphoblastic Leukemia with Monoclonal Antibodies and Chimeric Antigen Receptor Modified T Cells**

Elena Maino<sup>1</sup>, Anna Maria Scattolin<sup>1</sup>, Piera Viero<sup>1</sup>, Rosaria Sancetta<sup>1</sup>, Anna Pascarella<sup>1</sup>, Michele Vespignani<sup>1</sup> and Renato Bassan<sup>1</sup>

<sup>1</sup> Hematology and Bone Marrow Transplant Unit, Ospedale dell'Angelo e SS. Giovanni e Paolo, Mestre-Venezia, Italy

**Competing interests:** The authors have declared that no competing interests exist.

**Abstract.** The introduction of newer cytotoxic monoclonal antibodies and chimeric antigen receptor modified T cells is opening a new age in the management of B-lineage adult acute lymphoblastic leukemia. This therapeutic change must be very positively acknowledged because of the limits of intensive chemotherapy programs and allogeneic stem cell transplantation. In fact, with these traditional therapeutic tools the cure can be achieved in only 40-50% of the patients. The failure rates are particularly high in the elderly, in patients with post-induction persistence of minimal residual disease and especially in refractory/relapsed disease. The place of the novel immunotherapeutics in improving the outcome of adult patients with B-lineage acute lymphoblastic leukemia is reviewed.

**Citation:** Maino E, Scattolin AM, Viero P, Sancetta R, Pascarella A, Vespignani M and Bassan R. Modern Immunotherapy of Adult B-Lineage Acute Lymphoblastic Leukemia with Monoclonal Antibodies and Chimeric Antigen Receptor Modified T Cells. *Mediterr J Hematol Infect Dis* 2015, 7(1): e2015001, DOI: <http://dx.doi.org/10.4084/MJHID.2015.001>

**Published:** January 1, 2015.

**Received:** November 2, 2014.

**Accepted:** November 20, 2014.

This is an Open Access article distributed under the terms of the Creative Commons Attribution License (<http://creativecommons.org/licenses/by/2.0>), which permits unrestricted use, distribution, and reproduction in any medium, provided the original work is properly cited.

Correspondence to: Renato Bassan, UOC Ematologia, Ospedale dell'Angelo, Via Paccagnella 11, Mestre Venezia, Italy. E-mail: [renato.bassan@ulss12.ve.it](mailto:renato.bassan@ulss12.ve.it)

**Introduction.** Adult acute lymphoblastic leukemia (ALL) is biologically heterogeneous and can be subdivided into several clinico-prognostic entities.<sup>1</sup> The primary distinction is between B-cell and T-cell precursor (BCP, TCP) ALL, and in the former group between Philadelphia chromosome/BCR-ABL (Ph) positive and Ph- ALL. The overall outcome of adults with ALL is inferior to that of childhood ALL. Basically, survival is strictly related to a complete remission (CR) achieved early on, which is followed by an effective consolidation/maintenance therapy, in standard-risk patients (SR) and, an allogeneic stem cell transplantation (SCT), in high-risk (HR) patients.<sup>2,3</sup> In adolescent and adult patients with Ph- ALL in an age range between 15-18 and 60-65 years, the CR rate is 90% and, the overall survival (OS) rate is 40-50% at 3-5 years, with significant differences among age and risk groups.<sup>4,5</sup> In Ph+ ALL, results are suboptimal too despite the improvement due to the introduction of tyrosine kinase inhibitors.<sup>6</sup> In Ph- ALL, better OS, and disease-free survival (DFS) rates are increasingly

reported using pediatric-inspired schedules, at least in patients aged up to 40-50 years.<sup>7</sup> The outcome is worse in patients older than 55 years, with smaller proportions of long-term survivors.<sup>8</sup> Moreover during CR induction about 5% of the patients succumb to early complications, mainly infectious, and the risk of non-relapse mortality is still rather high after an allogeneic SCT (15% on the average). Overall, the common perception is that treatment intensity cannot be increased any further beyond this point in adult patients, without incurring into unacceptably high rates of treatment-related toxicity and mortality. Instead, new alternative therapeutics should be developed with a view of reducing the toxicity burden other than improving the antileukemic efficacy of available antileukemic programs. In addition, the relapse rate in adult ALL remains high and salvage therapy is at present unsatisfactory, with an effective rescue rate of 10-20% in most studies.

The most recent therapeutic innovations are represented by newer monoclonal antibodies (MoAb)

and the chimeric antigen receptor (CAR) modified T cells. These new, highly selective weapons target specific ALL cell antigens and would exhibit an improved activity versus toxicity ratio compared to chemotherapy or transplantation. In addition, they could be used sequentially or in combination with either treatment modality, to potentiate the overall treatment efficacy. Thus far, MoAb-based therapy and CAR T cell therapy were developed mainly for B-lineage but not T-lineage ALL. They have been utilized in all B-lineage subsets (BCP and mature B/Burkitt ALL; Ph- and Ph+ ALL), and demonstrated considerable activity in relapsed/refractory disease (R/R ALL). Therefore, they need to be exploited in untreated ALL, especially in high-risk subsets such as the elderly and the patient with high post-induction levels of minimal residual disease (MRD). Here we review the evidence supporting the use of therapeutic MoAb and CAR T cells in BCP ALL. Additional data can be found elsewhere.<sup>9-11</sup> Results from childhood studies will be reported whenever appropriate to illustrate specific points of interest.

**Modern Immunotherapy with Monoclonal Antibodies.** The challenge of novel immunotherapeutics is to improve survival without increasing toxicity. With MoAbs, the different and manageable toxicity profile only occasionally overlaps or worsens that associated with chemotherapy and SCT. For instance, mucositis and gastrointestinal toxicity, usually of high concern with intensive chemotherapy and SCT, are not typical of MoAb therapy. The apparent lack of cross-resistance with standard antileukemic drugs constitutes a further theoretic advantage. The third major issue is whether MoAb therapy might substitute, at least partially, for some intensive chemotherapy elements and/or SCT in patients in CR1. Prospective clinical trials should address this most important topic.

ALL cells express several membrane antigens. The ideal therapeutic target should be consistently expressed in every ALL subset, by all blast cells, at high intensity, be stable upon MoAb challenging and play a crucial role in metabolic events. At present, no MoAb satisfies all these requirements and a target expression of 20% out of the entire ALL cell population is considered enough to start a MoAb trial with some chance of success.

According to their structural characteristics and mechanism of action, MoAbs for ALL therapy belong to three major categories: naked antibodies, T-cell engaging bispecific single-chain (BiTE<sup>®</sup>) antibodies, and immunoconjugates/immunotoxins. The several trials launched with the most representative and therapeutically promising MoAb's, with or without associated chemotherapy, are summarized in **Figure 1** (frontline studies) and **Figure 2** (studies in R/R ALL) and detailed below.

## **Naked Antibodies.**

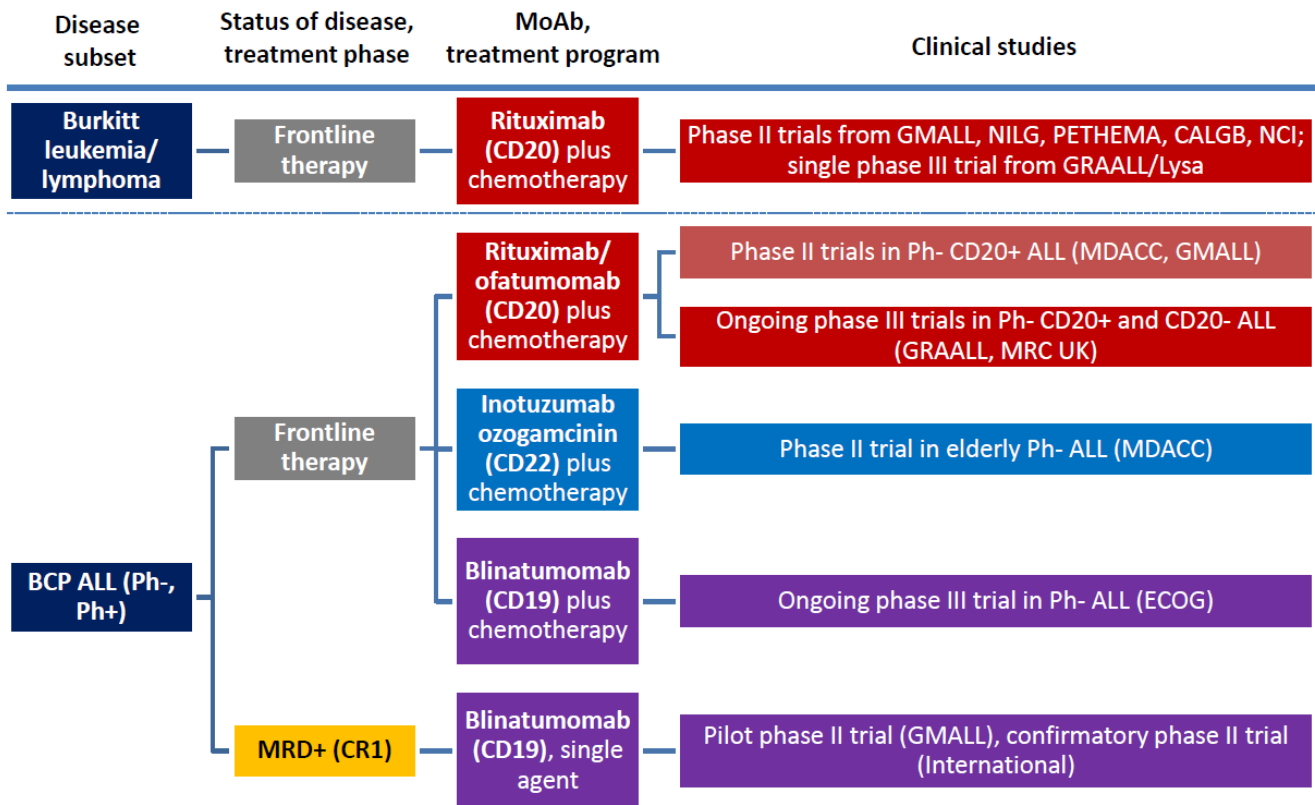
***Rituximab and Ofatumomab: anti-CD20 MoAb.*** The CD20 receptor is the target of chimeric monoclonal antibody Rituximab. CD20 is expressed by approximately 40% of BCP ALL cases and virtually any case of mature B-ALL (Burkitt leukemia). The CD20 receptor functions as a calcium channel playing a role in cell cycle and differentiation. Rituximab works as a classical MoAb, reacting at one terminus (Fab/Fv) with the CD20 epitope on the cell membrane, while the other end (Fc) binds to complement and Fc receptors of effectors cells. The ensuing MoAb-target cell interaction activates a complement-mediated cell lysis and/or an antibody-dependent cellular cytotoxicity (ADCC). Importantly, CD20 expression in CD20 + ALL is upregulated by corticosteroids, which are commonly given in prephase and continued for several days during induction therapy.<sup>10,12</sup>

Nothing is known about rituximab activity as a single agent in ALL, and contrary to other MoAbs experience in R/R ALL is very limited. One study indicated a response rate of 44% in 9 patients treated with a rituximab-chemotherapy combination.<sup>13</sup>

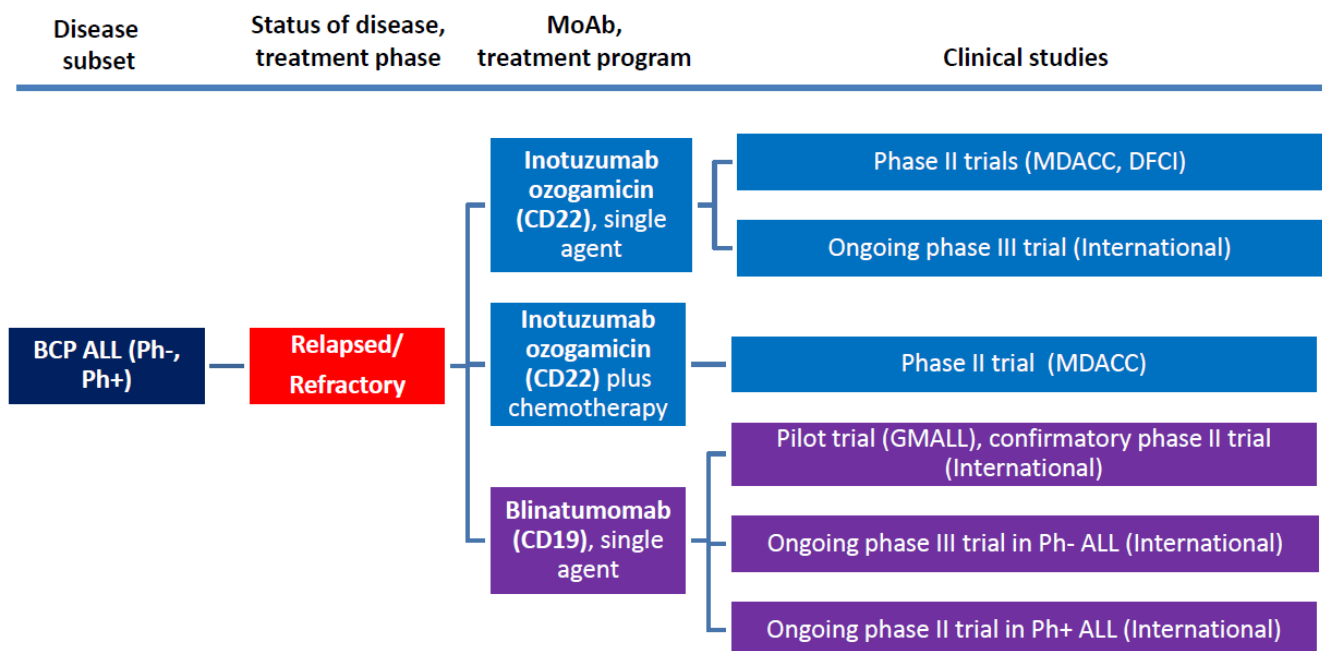
Rituximab was instead used in first-line phase II and III programs, and is used in Burkitt leukemia/lymphoma in adjunct to aggressive rotational drug regimens.

The usual rituximab schedule in these studies was 375 mg/m<sup>2</sup> for four-eight times, throughout induction and consolidation blocks. A randomized trial in Burkitt lymphoma confirmed the usefulness of adding rituximab to intensive chemotherapy blocks, in both HIV negative and positive HIV patients.<sup>14,15</sup> Several other Burkitt leukemia/lymphoma regimens reported high response rates, with a curability rate consistently above 50% and most often between 70-80% and close to 90%-100% in fit patients younger than 55-60 years.<sup>14-21</sup> This means an average 20% or more improvement over prior results obtained with similar chemotherapy regimens without rituximab, with no substantial difference in toxic side effects. Nowadays rituximab is part of the standard of care for Burkitt leukemia/lymphoma.

About rituximab in frontline therapy of BCP ALL, there were two randomized trials and two phase II trials in Ph- ALL, all evaluating its role in addition to induction and consolidation chemotherapy. In the GRAALL (France/Belgium/Switzerland) phase III trial, CD20+ BCP, ALL patients (CD20 expression >20%) were randomized with a 2x2 design concurrently testing an augmented cyclophosphamide dose; whereas in the randomized MRC (United Kingdom) trial, all BCP ALL patients were randomized to assess the role of the concomitant corticosteroid therapy in upregulating CD20 expression in CD20- patients. The results from these two controlled studies are not yet known and are awaited



**Figure 1.** Overview of MoAb studies with rituximab, inotuzumab ozogamicin, and blinatumomab in frontline therapy of adult BCP ALL and Burkitt leukemia/lymphoma.



**Figure 2.** Overview of MoAb studies with rituximab, inotuzumab ozogamicin, and blinatumomab in adult R/R BCP ALL.

patient cohorts receiving Hyper-CVAD chemotherapy with or without rituximab were analyzed. In patients aged 60 or less, the CR rate in the rituximab arm was 95% and 3-year survival 75% (n=68) compared with 47% without rituximab (n=46; P=0.003), with a proportional increase in MRD negativity evaluated by flow cytometry (81% vs 58%). A subsequent update showed for the rituximab-treated group a CR duration of 69% at 3 years with an OS of 71%.<sup>23</sup> In the small

group of patients older than 60 (n=16), the CR rate was high (88%) but the OS was only 29%. The other first-line phase II trial was from GMALL (Germany) with rituximab added to the 07/2003 chemotherapy schema.<sup>24</sup> This report compared 181 rituximab-treated patients with 82 pre-rituximab patients. In SR patients (n=196), CR rate was 94% with rituximab and 91% without; however, minimal residual disease (MRD) response, evaluated molecularly at week 16 (<10<sup>-4</sup>)

and, 5-year survival were both improved in the rituximab group, from 59% to 90% and from 57% to 71%, respectively. Similarly, in HR patients (n=67), CR rate was 81% with rituximab and 88% without; and MRD response and 5-year survival were improved from 40% to 64% and from 36% to 55%, respectively. Toxicities were comparable in the two cohorts. In summary, rituximab could improve the long-term outcome of patients with CD20+ BCP ALL and seems to enhance the MRD response to induction and early consideration therapy. This issue arises considerable interest, given the strict relationship between MRD and outcome in adult ALL and the dramatically worse outcome of MRD+ CD20+ ALL as opposed to MRD-CD20+ ALL.<sup>25</sup> Although the CD20 antigen is expressed in a relevant proportion of Ph+ ALL cases, there is no data on the therapeutic role of this MoAb in this subset. The most significant data relative to the use of rituximab in B-lineage ALL Burkitt leukemia/lymphoma are summarized in **Table 1**.

Ofatumumab is another anti-CD20 MoAb, which binds to a different epitope on the CD20 molecule than rituximab, resulting in greater complement-dependent cytotoxicity. One study evaluated ofatumumab added to the Hyper-CVAD regimen as frontline therapy of adult patients with CD20+ ALL.<sup>26</sup> With this regimen, 22 of 23 evaluable patients achieved CR (95%) and were MRD-negative (by flow cytometry) after cycle 1. One-year remission and OS duration was 91%.

**Epratuzumab: anti-CD22 MoAb.** Epratuzumab is a humanized MoAb targeting CD22. The CD22 antigen is a transmembrane sialoglycoprotein expressed explicitly by B lymphoid cells. It is expressed on 100% of mature B-cell ALL and up to 90% of BCP ALL.<sup>27</sup>

CD22 regulates B-cell activation and the interaction of B-cells with T-cells and antigen-presenting cells. Because of that, CD22 is a good therapeutic target in BCP ALL. CD22 is rapidly internalized after binding the MoAb so that the exposure to epratuzumab results in downregulation of B-cell activation and signaling, with proliferation inhibition.<sup>28</sup> In a phase I protocol of the Children's Oncology Group (COG), applied to children with R/R BCP ALL, 15 children received four doses of epratuzumab twice weekly for two weeks, then four weekly doses with a standard reinduction chemotherapy. MRD was evaluated by flow cytometry, and the absence of MRD was defined as complete molecular remission (CMR). At the end of the six-week reinduction therapy, nine patients were in CR, and seven of them were in CMR. Two patients had dose-limiting toxicity, one grade four seizure, and one grade 3 transaminase elevation. A subsequent phase II trial (COG ADVL04P2)<sup>28,29</sup> enrolled 114 patients between 2-30 years of age in first relapse, comparing two different epratuzumab schedules in addition to traditional reinduction chemotherapy. The CR rate was comparable in the two study arms (epratuzumab weekly x 4 doses versus epratuzumab twice weekly x 8 doses: CR 65% vs. 66%) and not significantly higher than the historical control. The CMR rate was however higher in epratuzumab-treated patients (42%) than historical controls.

The adult trial SWOG S0910<sup>30</sup> evaluated 32 R/R ALL patients treated with epratuzumab (4 weekly doses) in association with clofarabine and cytarabine. The CR rate was 45%, significantly higher than the 17% CR rate observed in a similar trial with clofarabine/cytarabine without epratuzumab.<sup>31</sup> Two other recent reports available only in abstract

**Table 1.** Rituximab in adult ALL: design and results of main clinical studies.

Target antigen expression (CD20)	Study (no. of patients), ref.	Study type and design	Main results (R-treated group/arm vs historical/control group/arm)
40%, BCP ALL (Ph- and Ph+)	MDACC (n=282) <sup>22</sup>	Phase II, frontline therapy (Hyper-CVAD + R), CD20+ Ph- ALL	<ul style="list-style-type: none"> <li>Age &lt;60 years (n=68): 3-year CR duration 70%, OS 75% (P&lt;.001 and P=.003 vs historical without R)</li> <li>Age &gt;60 years (n=28): 3-year CR duration 45%, OS 28% (P=NS vs historical without R)</li> </ul>
	GMALL (n=263) <sup>24</sup>	Phase II, frontline therapy (GMALL 07/2003 + R), CD20+ Ph- ALL	<ul style="list-style-type: none"> <li>SR (n=196) and HR (n=67); R-treated n=181 (cumulative data)</li> <li>SR group: CR 94%, MRD &lt;10<sup>-4</sup> at wk 16 90%, 5-year continuous CR 90% and OS 71% with R (without R: 91%, 59%, 47%, 57%)</li> <li>HR group: CR 81%, MRD &lt;10<sup>-4</sup> at wk 16 64%, 5-year continuous CR of SCT patients 67% and OS 55% (without R: 88%, 40%, 37%, 36%)</li> </ul>
100% (Burkitt leukemia/lymphoma)	7 studies (n=604, cumulative)*	Phase II, frontline therapy (various regimens + R), BL	<ul style="list-style-type: none"> <li>CR 78-100%, 3-year OS 62-100% (average 20% better than historical control)</li> </ul>
	GRAALL-Lysa (n=257) <sup>21</sup>	Phase III, frontline therapy (LMBA02 + R vs LMBA02), BL	<ul style="list-style-type: none"> <li>3-year event-free survival 76% in R arm (n=128) vs 64% in no R arm (n=129, P=0.046)</li> </ul>

R, rituximab; NS, not significant; other abbreviations: see text

\*Hyper-CVAD (MDACC, n=31), B-NHL 2002 (GMALL, n=185), DA-EPOCH (NCI, n=30), 10 002 (CALGB, n=105), B-NHL 2002 Italy (NILG, n=105), B-NHL 2002 Spain (PETHEMA, n=118), CODOX/M-IVAC (Naples-Turin, n=30)<sup>14-20</sup>



form concerned a phase I escalation study of <sup>90</sup>yttrium-labeled epratuzumab tetratexan<sup>32</sup> and epratuzumab added to vincristine/dexamethasone in R/R ALL.<sup>33</sup> In the first study (n=17), 2 of six patients treated with a dose of 10 mCi/m<sup>2</sup> achieved CR. In the second trial, including 26 elderly patients, four patients achieved CR, and one a CR with incomplete platelet recovery.

These are promising results obtained in very poor risk patient populations. Epratuzumab is well tolerated. The most common adverse events were myelosuppression and mild to moderate infusion reactions such as fever, nausea, occasionally seizures, and transaminase elevation.

***Alemtuzumab: anti-CD52 MoAb.*** Alemtuzumab is a genetically engineered humanized anti-CD52 MoAb. CD52 is a glycosylphosphatidylinositol-anchored membrane glycoprotein expressed by 70-80% of both BCP ALL and T-ALL, making it an attractive therapeutic target. Alemtuzumab has demonstrated significant activity in chronic lymphocytic leukemia but was not found effective as a single agent in acute myeloid leukemia and ALL.

In R/R ALL alemtuzumab was tested in a small adult series of 6 patients (3 with Ph+ ALL) at the dose of 30 mg given by subcutaneous route three times weekly for 4-12 weeks (no CR) and was also scarcely effective in a pediatric trial on 13 patients (one CR).<sup>34,35</sup>

In untreated patients, alemtuzumab was administered as a single agent in a CALGB trial<sup>36</sup> after three intensive chemotherapy modules in an attempt to lower post-remission MRD. In 11 evaluable patients, there was a 1-log median MRD reduction and a noteworthy DFS (median 53 months), but follow-up was provided only for 14 surviving patients. Of note, the use of alemtuzumab was associated with CMV infection in 8 of 24 patients and herpes virus infection in 5 patients.

For these reasons, alemtuzumab, albeit partially effective, is unlikely to be developed any further in ALL therapy. It causes a drastic reduction of lymphocytes including CD4+ and CD8+ T cells predisposing to opportunistic infections such as CMV and other viruses and fungi.<sup>36</sup> Thereafter, it requires careful patient monitoring with serial CMV DNA determinations for pre-emptive therapy, as well as an adequate anti-infectious prophylaxis.

### **Immunotoxins and Immunoconjugate Antibodies**

***Inotuzumab Ozogamicin: anti-CD22 MoAb.*** Inotuzumab ozogamicin (IO) is an anti-CD22 MoAb conjugated to calicheamicin, which is a powerful anthracycline-like drug. Calicheamicin, a natural product of *Micromonospora echinospora*,<sup>37</sup> is a potent cytotoxic agent enabling cell killing even in the presence of relatively few target sites. Although CD22 expression is required, IO-related apoptotic effect is

entirely mediated by calicheamicin and not by CD22 signaling. IO is rapidly internalized and delivers calicheamicin intracellularly. The toxin binds the minor DNA groove breaking the double-stranded DNA in a sequence-specific manner.

Forty-nine patients with R/R ALL were treated in a phase I/II trial at MD Anderson Hospital with single agent IO.<sup>38</sup> Their median age was 36 years and range 6-80 years. All patients had greater than 50% CD22 expression on lymphoblasts, and the majority were heavily pretreated. A starting dose of 1.3 mg/m<sup>2</sup> was used, subsequently increased to 1.8 mg/m<sup>2</sup>. The CR rate was 18% and another 39% of the patients had a CR with incomplete hematologic recovery (CRi), for an overall response rate of 57%. Among the 27 patients who achieved a hematological response, 17 (63%) attained an MRD remission (flow cytometry). Median response duration was six months, with a trend to improved survival for the 13 patients treated at first salvage. This study, updated including 90 total patients, confirmed the previous results (CR 19%, CRi 39%); furthermore, the non-hematological toxicity was reduced using the weekly schedule.<sup>39</sup> Thus, with IO a morphological CR was obtained in more than 50% of the subjects treated, in association with a complete MRD response in the majority of these cases. Most responses were short lived without proceeding to transplantation (n=36), however the obtaining a CR with associated MRD response, the absence of a complex karyotype such as t(4;11), t(9;22), or an abnormal chromosome 17 and a disease status at first salvage were predictive of an improved outcome with a survival probability of 42+ months.<sup>40</sup> A negative MRD was observed in 72% of the patients achieving CR/CRi. A new trial for R/R ALL incorporated IO into a reduced intensity Hyper-CVAD regimen.<sup>41</sup> Of 35 patients treated, 18 (51%) entered CR, 6 (17%) CRi and 1 (3%) marrow CR, and 12 of them could proceed to allogeneic SCT. Median survival of responders was 14 months and was not reached in patients at first salvage. The outcome of IO-treated patients proceeding to allogeneic SCT was examined separately.<sup>42</sup> The study analyzed the outcome of 26 such patients, of whom 23 were in CR at time of transplant (15 MRD-negative) and three were not. MRD-negative patients had the best outcome with a 1-year survival of 42%. However, non-relapse mortality was high in relation to liver toxicity (40% at six months), with 5 deaths by venoocclusive disease. These results could improve choosing the less hepatotoxic conditioning regimens and concomitant drugs. In conclusion, these single-center studies IO brought more patients with R/R ALL to allotransplantation (45%) than chemotherapy, but the salvage rate was affected by transplant-related toxicity, indicating the need of a careful design of all treatment components. An international phase III study

comparing IO with standard reinduction therapy in R/R ALL is near to a conclusion.

In untreated patients, IO was added to mini-hyper-CVAD (dose reductions and no anthracycline) in elderly ALL.<sup>43</sup> Twenty-seven patients aged 60-79 years (median 69 years) were treated, and 25 (96%) entered CR, all with negative flow cytometry MRD. The 1-year survival was 81%, superior to the historical control group. Although the follow-up is short, these are outstanding induction results obtained in a high-risk patient population. Another US Intergroup trial is planned in patients aged 18-39 years, adding IO to the C10403 chemotherapy backbone.

On the toxicity side, IO is myelotoxic, as reflected by the high rates of CRi. Grade 3-4 non-hematologic adverse events included drug-related fever (18%) with hypotension, hyperbilirubinemia (4%) and transaminase elevation (1%). All the events but the increased bilirubin were reversible. A biopsy demonstrated liver fibrosis in two patients. A venoocclusive disease of the liver was reported in 5/22 patients after allogeneic SCT.<sup>39</sup> However, 4 of 5 of these patients received a preparative regimen of clofarabine/thiotepa. Furthermore, two distinct reports suggest a benefit toward liver toxicity with weekly rather than single dose IO administration.<sup>39,44</sup>

The most significant data relative to the use of IO in B-lineage ALL are summarized in **Table 2**.

**BL22 and CAT-8015: anti-CD22 MoAbs.** Because the CD22 antigen-immunotoxins is rapidly internalized, CD22 is an attractive therapeutic target.<sup>45</sup> The first-generation immunotoxins BL22 demonstrated cytotoxicity in vitro and also in vivo and in a phase I trial. A decrease of leukemia blasts was observed in 16 out of 23 ALL patients, but no CR was obtained.<sup>46</sup> Three of these patients developed neutralizing antibodies,<sup>47</sup> but no allergic reaction, vascular leak or hemolytic uremic syndrome occurred.

A second-generation immunotoxins, CAT-8015, was subsequently developed,<sup>45</sup> trying to reduce non-specific toxicities, increase MoAb stability and improve activity.<sup>46</sup> In one small trial, 4 out of 9 treated patients achieved a CR.<sup>10</sup> Another phase I trial showed a CR in 4 out of 19 heavily pretreated children and young adults, plus one partial response and 8 hematological improvements.<sup>47</sup> Resistance due to low levels of DPH4 mRNA and target protein was described.<sup>48</sup> Further analysis of the DPH4 gene promoter demonstrated hypermethylation in the resistant cells. This mechanism could be reversed by hypomethylating agents such as 5-azacytidine.

**Combotox: dual anti-CD19/CD22 MoAb.** Combotox is a combination of anti-CD19 and anti-CD22 deglycosylated ricin-A chain immunotoxin.<sup>49</sup> This treatment has the advantage of targeting two different antigens. In a pediatric trial, 3 of 17 R/R patients achieved a CR.<sup>50</sup> The dose-limiting toxicity was a vascular leak syndrome, caused by an endothelial damage due to a unique aminoacid motif in the ricin-A toxin. Preclinical studies in murine ALL model demonstrated synergy with the sequential administration of combotox with cytarabine.

**SAR3419 and anti-B4-blocked ricin: anti-CD19 MoAb.** SAR3419 is an anti-CD19 humanized MoAb linked to a highly powerful tubulin inhibitor, maytansinoid DM4, eliciting ADCC.<sup>51</sup> SAR3419 is internalized and then routed to lysosomes, whereupon it is degraded to yield the active drug. In preclinical models, an extended duration of remission was documented when SAR3419 was administered after an induction regimen as maintenance therapy.<sup>52</sup> A Phase II trial on R/R ALL is ongoing. Reversible corneal toxicity was described as dose-limiting toxicity.

The anti-B4-blocked ricin MoAb was used in a frontline CALGB study in patients with CD19+ ALL

**Table 2.** Inotuzumab ozogamicin (IO) in adult ALL: design and results of main clinical studies.

Target antigen expression (CD22)	Study (no. of patients), ref.	Study type and design	Main results
80-90%, BCP ALL (Ph- and Ph+)	MDACC (n=90) <sup>39</sup>	Phase II, R/R ALL, single agent IO (single dose or weekly)	<ul style="list-style-type: none"> <li>• CR 19%, CRi 39%, refractory 38%, early death 4%</li> <li>• MRD response (flow-cytometry): 36/50 (72%)</li> <li>• Median OS 6.2 months</li> <li>• Median CR duration 7 months (42% at 1 year)</li> <li>• Allogeneic SCT feasibility: 36 (40%), of whom 13 (36%) alive and well</li> <li>• Favorable prognostic factors: treatment at first salvage (median OS 9.2 months), achievement of CR (median survival 13.1 months), MRD negativity (median remission duration 11.5 months)</li> </ul>
	MDACC (n=27) <sup>41</sup>	Phase II, frontline therapy of elderly ALL (with mini-Hyper-CVAD)	<ul style="list-style-type: none"> <li>• Patient age 60-79 years (median 69 years)</li> <li>• CR 96%</li> <li>• MRD response (flow-cytometry): 25/25 CR (100%)</li> <li>• 1-year OS 81%</li> </ul>

Other abbreviations: see text

instead of high-dose cytarabine consolidation, reserved to CD19-negative ALL patients.<sup>53</sup> Forty-six patients were treated. Although feasible, this treatment did not result into an improved outcome and/or MRD response compared to the other patients.

### **Bispecific T-Cell Engager (BiTE<sup>®</sup>) Antibodies.**

Blinatumomab: anti-CD3/CD19 construct. Blinatumomab is the first member of the novel class of BiTE<sup>®</sup> antibodies. It is a bispecific single-chain antibody construct which simultaneously reacts to CD19 and CD3 epitopes, activating CD3+ T cells and re-directing their cytotoxicity against CD19+ ALL cells. Activated T cells induce perforin-mediated death on the target cells.<sup>54</sup> CD19 is the most commonly expressed antigen in BCP ALL, with the highest density of expression and a slower internalization rate compared with CD22. Blinatumomab is given by continuous intravenous infusion at nine µg/d on days 1-7 and 28 µg/d on days 8-28, using a portable infusion device. A two-week interval follows each cycle. Although blinatumomab is active at very low concentrations, the prolonged infusion is necessary to recruit and expand effector T-cells and achieve therapeutic efficacy in the bone marrow.<sup>55</sup>

The first pilot trial was conducted in MRD+ ALL.<sup>54,56</sup> MRD+ ALL is a high-risk condition, recognized by the persistence of the molecular signal of the disease in remission marrows after induction-consolidation therapy, usually, at a level of  $10^{-4}$  or, greater after induction/early consolidation therapy, or by the reappearance of the MRD signal during follow up.<sup>57</sup> MRD positivity heralds the clinical relapse within few weeks or months, but beside that, it is a more favorable setting than R/R ALL, because MRD+ patients still exhibit a good performance status and harbor a significantly lower disease burden. Blinatumomab was administered to 21 MRD+ patients as a four-week continuous infusion; the median patient age was 47 years and 7 patients had poor-risk cytogenetics (5 Ph+ and 2 with mixed lineage leukemia). Ten of 20 evaluable patients achieved a major MRD response  $<10^{-4}$ , including 3 of 5 Ph+ ALL (60%). Most notably, 9 out of 11 patients with an MRD  $>10^{-2}$  achieved a molecular remission and 6 out of 11 not having a subsequent allogeneic SCT remained in CR after a median follow-up of 30 months, compared to 6 of 9 patients receiving an allogeneic SCT. Treatment toxicity consisted of an early cytokine release syndrome (pyrexia, chills), plus increased transaminases, albumin reduction, hypokalemia and an acute neurological syndrome (seizure, syncope, headache, somnolence) which was reversible in all cases. Due to these encouraging results a larger confirmatory phase II trial was performed (n=116), with 106 patients evaluable in an early report.<sup>58</sup> Rates of complete MRD response were 78% after one cycle

and 80% after two cycles, with no difference across baseline age, line of treatment and MRD burden categories. Toxicity included pyrexia (88%), headache (38%), tremor/chills (29%/25%), nausea/vomiting (22%). Serious adverse events occurred in 5% of the patients (including ataxia/aphasia/encephalopathy).

Blinatumomab was extensively used in Ph- R/R ALL.<sup>59</sup> In a first exploratory study, 17 out of 25 evaluable patients achieved CR or CRi within two cycles of treatment. Median response duration was 7.1 months and median OS 9.7 months. Three patients relapsed with a CD19 negative clone. A larger confirmatory study was performed in 189 heavily pretreated, high-risk subjects, either primary refractory or in first relapse after a CR lasting  $<12$  months, failing allogeneic SCT or in subsequent relapse.<sup>60</sup> Forty-three percent of the patients achieved CR/CRi (79% after the first cycle). In responsive patients with evaluable MRD data (n=73), 51 (70%) had a complete MRD response and 9 (n=9) reached an MRD  $<10^{-4}$ .<sup>61</sup> Median DFS was 6.9 months in patients with MRD response and 2.3 months in patients without MRD response. Moreover, 40% of responders underwent an allogeneic SCT after blinatumomab only.<sup>62</sup> The rate of serious adverse events affecting the central nervous system was 2-3%. A final phase III study comparing blinatumomab with standard "investigator choice" chemotherapy in R/R ALL is currently underway (study 311, n=400). Another smaller trial in R/R Ph+ ALL is near to completion in the fall 2014 (study 216, n=41). Of note, in blinatumomab studies some of the relapses occurred at extramedullary sites or were related to the expansion of a CD19- ALL clone.

Beside the several studies in MRD+ and R/R adult ALL, a randomized trial by the ECOG in patients 30-70 years of age (study 1910, n=360) will compare an early consolidation therapy with or without blinatumomab in newly diagnosed Ph- BCP ALL.

The most significant data relative to the use of blinatumomab in B-lineage ALL are summarized in **Table 3**.

### **Modern Immunotherapy with CAR T Cells.**

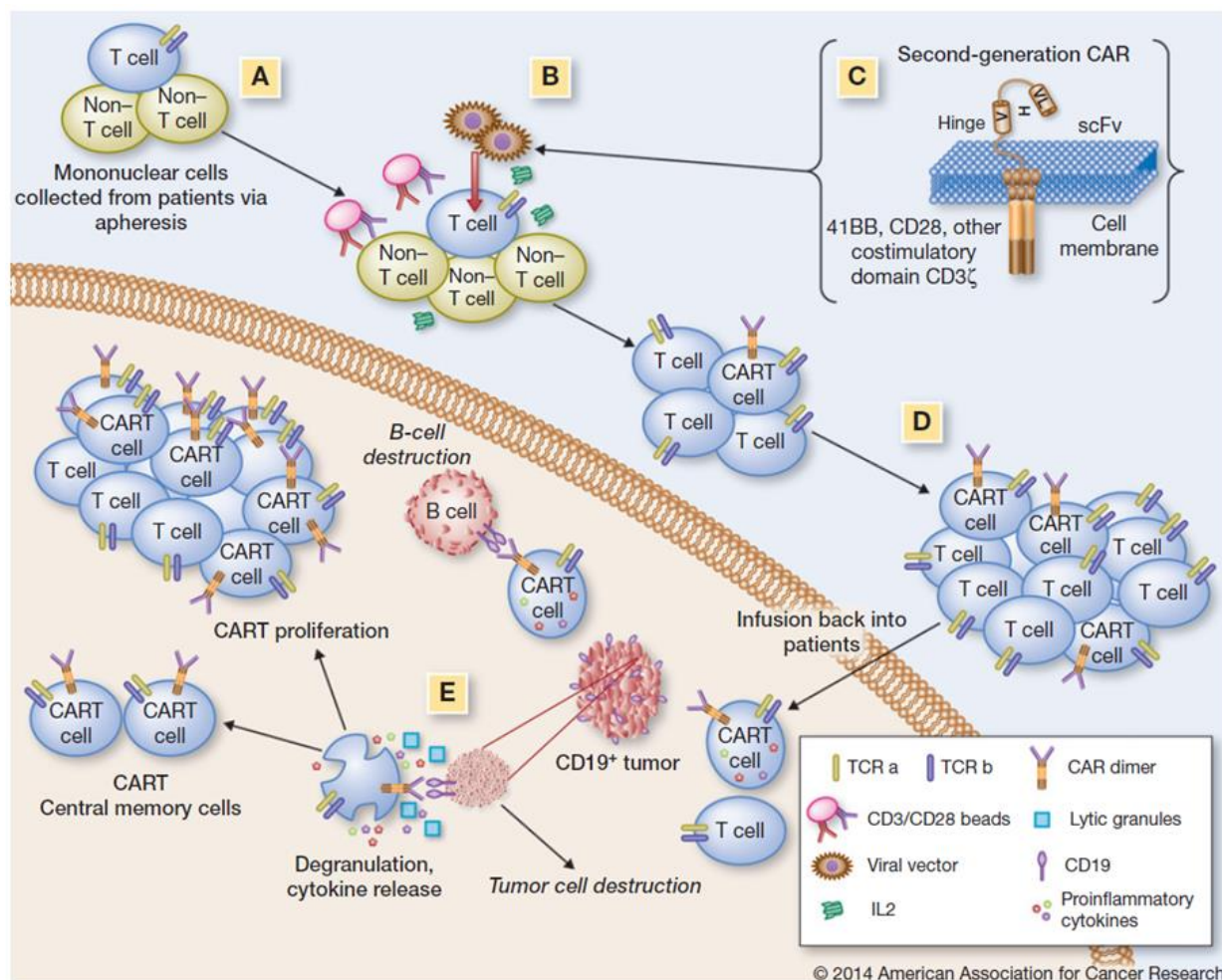
A breakthrough in cellular therapy for BCP ALL. Normal autologous or allogeneic T cells can be harvested from patients or normal donors to be genetically modified to express a chimeric antigen receptor (CAR) recognizing specific targets on leukemic cells, then expanded and reinfused in the patient to exert antileukemic activity. A CAR consists of a single chain variable antibody fragment highly specific to a tumor antigen, which is fused to the transmembrane domain and a T cell signaling moiety<sup>63</sup>. The resulting receptor, when expressed on the surface of a T cell, mediates binding of the target tumor antigen and activates a signal to the T cell, inducing target cell lysis. Second and third generation CAR T



**Table 3.** Blinatumomab in adult ALL: design and results of main clinical studies.

Target antigen expression (CD19)	Study (no. of patients), ref.	Study type and design	Main results
98-100%, BCP ALL (Ph- and Ph+)	GMALL (n=21) <sup>56</sup>	Pilot phase II, MRD+ ( $\geq 10^{-3}$ ) (CR1), single agent blinatumomab	<ul style="list-style-type: none"> <li>16/20 evaluable patients achieved molecular CR</li> <li>DFS 61% at 2.5 years</li> <li>Superimposable outcome of Ph- MRD responders with (n=6) or without (n=6) allogeneic SCT (DFS 80% at 2.5 years)</li> </ul>
	International (n=116) <sup>58</sup>	Confirmatory phase II, MRD+ ( $\geq 10^{-3}$ ) (CR1), single agent blinatumomab	<ul style="list-style-type: none"> <li>Median age 45 years (range 18-76 years)</li> <li>35% MRD+ in second/third CR</li> <li>88 (78%) had molecular CR after one cycle, 90 after &gt;1 cycle (80%)</li> <li>79 alive on follow-up</li> <li>No baseline characteristic predictive of MRD response</li> </ul>
	GMALL (n=25) <sup>59</sup>	Pilot phase II, R/R Ph- ALL, single agent blinatumomab	<ul style="list-style-type: none"> <li>17 patients achieving CR/CRi (68%)</li> <li>Median DFS 7.1 months</li> <li>Median OS 9.7 months</li> </ul>
	International n=189) <sup>60</sup>	Confirmatory phase II, R/R Ph- ALL, single agent blinatumomab	<ul style="list-style-type: none"> <li>Median age 39 years (range 18-79 years)</li> <li>43% overall achieved CR/CRi (79% of whom after 1 cycle)</li> <li>45% relapsing after allogeneic SCT (n=64) achieved CR/CRi</li> <li>Median DFS 5.9 months</li> <li>MRD response in evaluable CR/CRi patients (n=73): 80% (70% complete)</li> <li>Median OS for MRD responders 11.4 months (vs 6.7 months)</li> <li>Median DFS for MRD responders 6.9 months (vs 2.3 months)</li> </ul>

Other abbreviations: see text



**Figure 3.** Production and activity of CAR T cells against CD19+ BCP ALL. A, stimulation of T cells using beads coated with CD3/CD28 MoAb's and with IL2 support (other methods available; see original reference for details). B, transduction of T cells using a viral vector encoding for CD19-CAR (other methods available). C, design of second generation CAR T cells. D, T cell transduction, expansion and differentiation into T effector phenotype. E, target recognition, destruction and differentiation into T memory phenotype. (Used with permission, from Kenderian SS, Ruella M, Gill S, Kalos M. Chimeric antigen receptor T cell therapy to target hematological malignancies. *Cancer Res.* 2014;74:6383-6389).

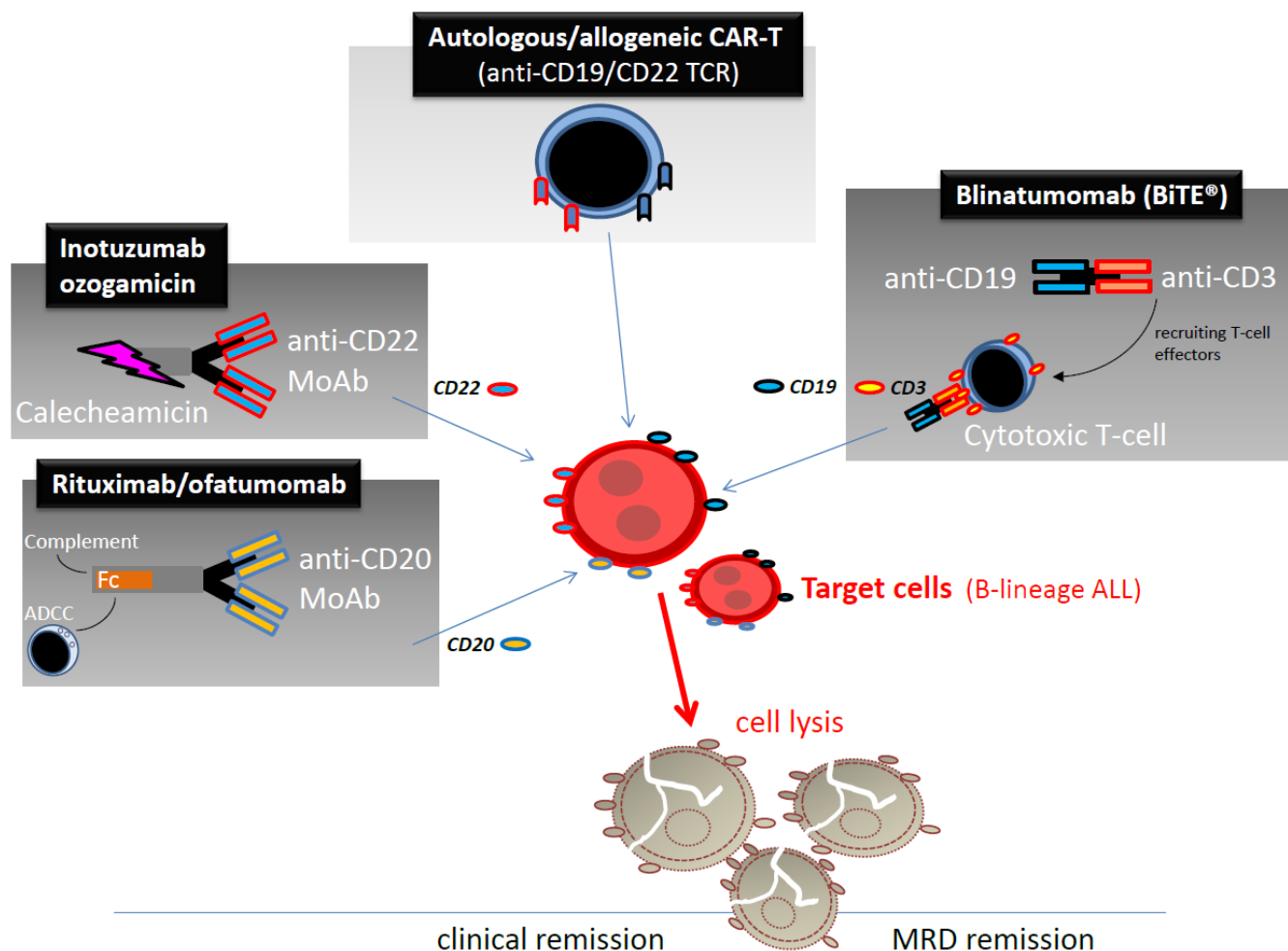


cells present a single-chain variable fragment that resides outside of the T cell membrane and is linked to stimulatory molecules inside the T cell. The general schema for production of CAR T cells and their *in vivo* activity against CD19+ ALL cells is shown in **Figure 3**.

**Clinical studies with CAR T cells.** CAR T cells with specificity for CD19 have shown promising results in chronic lymphocytic leukemia.<sup>64</sup> Preliminary results of this approach used in two children with R/R ALL were published.<sup>65</sup> In one case there was a sustained remission. Other recent pre-clinical studies support additional genetic modifications to achieve optimal clinical efficacy.<sup>66-68</sup> Altogether, there is accumulating evidence pointing to the relevant activity of CD19-CAR T cells and CD22-CAR T cells in R/R ALL. These patients are usually prepared with immune suppressive therapy before receiving the CAR T cell infusion (with cyclophosphamide and fludarabine). A breakthrough publication<sup>69</sup> demonstrated the potential of this treatment in 5 adult patients with R/R ALL (age range 23-66 years). At time of CAR T cell therapy, 3 patients were refractory to salvage chemotherapy, and one was MRD+. After CAR T, all were in clinical and molecular CR, and 4 out of the 5 patients could undergo an allogeneic SCT. Other reports soon

followed with either CD19-CAR T or CD22-CAR T, expanding our knowledge about this innovative treatment method.<sup>70-73</sup> Two very recent publications reported the final results of prospective trials using CAR T cells obtained through different methodology on 30 and 21 patients with relapsed ALL, respectively, including a few adult subjects.<sup>74,75</sup> In the first study autologous CD19-CAR T cells induced a CR in 27 (90%) patients (of whom 2 had previously failed blinatumomab, and 15 had relapsed following allogeneic SCT). The event-free survival was 67% at 6 months, associated with persistence of CAR T cells (68%) and B-cell aplasia (73%). In the second trial, aimed at establishing the maximum tolerated dose of CAR T cells (defined as  $1 \times 10^6$ /kg CAR T cells), the generation of CAR T cells was successful in 20 of 21 patients (90%). Treatment toxicity mediated by cytokine release was fully reversible, prolonged B-aplasia did not occur, and 14 patients got a CR (70%) including 6 of 6 with primary refractory ALL. Moreover, 12 patients achieved MRD negative status, and 10 proceeded to allogeneic SCT. In both studies CAR T cells were detectable in the cerebrospinal fluid, clearing off blast cells in some patients with meningeal leukemia.

Presently, CAR T cell treatment remains experimental



**Figure 4.** Overview of ALL cell targets and mechanisms of action of rituximab/ofatumomab, inotuzumab ozogamicin, blinatumomab and CAR T cells in adult BCP ALL

and available only at selected centers due to its technical complexity. It is however highly promising and must be developed further as a potential major step forward in the management of adult BCP ALL. CAR T cells carry peculiar toxicities related to cell expansion/activation, resulting in a cytokine-release syndrome which is occasionally associated with cardiorespiratory failure requiring admission to intensive care unit. The interleukin-6 inhibiting agent tocilizumab is effective in this setting. The degree to which this treatment causes a permanent B-cell depletion with severe hypogammaglobulinemia in long-term survivors is another critical point.

**Conclusions.** Rituximab, IO, blinatumomab and CAR T cells can all contribute through different mechanisms to increase the cure rate in adult B-lineage ALL (Figure 4). Notably, both the clinical effectiveness and

the manageable toxicity profile demonstrated by single agent IO and blinatumomab in hundreds of patients with R/R or MRD+ disease make them suitable for immediate evaluation in frontline therapy, with or without associated chemotherapy. The first clinical trials are ongoing. The expectations concern an overall, sound therapeutic advancement compared to current results, as well as a change in the indications for allogeneic SCT in CR1, at least in responsive patients previously defined at high-risk by the persistence of post-induction MRD. As regards CAR T cells, although their use in large scale trials is still precluded by the complexity and cost of the procedure, they could soon become another powerful option to treat this illness, whenever required and beyond the new therapeutic standards set by MoAb/chemotherapy combinations.

## References:

- Foa R, Guarini A, Vitale A. Approach to the Patient with a Suspect of ALL. In: Goekbuget N, ed. Recommendations of the European Working Group for adult ALL. Bremen-London-Boston: UNI-MED Verlag AG; 2011:24-31. PMID:21539075
- Bassan R, Intermesoli T. Induction therapy. In: Gokbuget N, ed. Recommendations of the European Working Group for adult ALL. Bremen-London-Boston: UNI-MED Verlag AG; 2011:66-73.
- Bassan R, Intermesoli T. Consolidation therapy. In: Goekbuget N, ed. Recommendations of the European Working Group for adult ALL. Bremen-London-Boston: UNI-MED-Verlag AG; 2011:73-79.
- Bassan R, Intermesoli T, Oldani E. Prognostic factors and risk adapted therapy. In: Goekbuget N, ed. Recommendations of the European Working Group for adult ALL. Bremen-London-Boston: UNI-MED Verlag AG; 2011:40-52.
- Bassan R, Hoelzer D. Modern therapy of acute lymphoblastic leukemia. *Journal of Clinical Oncology*. 2011;29:532-543. <http://dx.doi.org/10.1200/JCO.2010.30.1382> PMID:21220592
- Maino E, Sancetta R, Viero P, et al. Current and future management of Ph/BCR-ABL positive ALL. *Expert Review of Anticancer Therapy*. 2014;14:723-740. <http://dx.doi.org/10.1586/14737140.2014.895669> PMID:24611626
- Huguet F, Leguay T, Raffoux E, et al. Pediatric-inspired therapy in adults with Philadelphia chromosome-negative acute lymphoblastic leukemia: the GRAALL-2003 study. *J Clin Oncol*. 2009;27:911-918. <http://dx.doi.org/10.1200/JCO.2008.18.6916> PMID:19124805
- Gokbuget N. How I treat older patients with ALL. *Blood*. 2013;122:1366-1375. <http://dx.doi.org/10.1182/blood-2012-07-379016> PMID:23673859
- Hoelzer D, Gokbuget N. Chemoimmunotherapy in acute lymphoblastic leukemia. *Blood Rev*. 2012;26:25-32. <http://dx.doi.org/10.1016/j.blre.2011.08.001> PMID:21958552
- Kantarjian H TD, Wayne AS, O'Brien S. Monoclonal antibody-based therapies: a new dawn in the treatment of acute lymphoblastic leukemia. *Journal of Clinical Oncology*. 2012;published online on August 13, 2012; <http://dx.doi.org/10.1200/JCO.2012.41.6768>
- Bassan R., M. SA, E. M, et al. Monoclonal antibody therapy of adult acute lymphoblastic leukemia: progress and challenge for new clinical trials. *Drugs and Cell Therapies in Hematology*. 2013;[S.I.], v. 2:5-20.
- Dworzak MN, Schumich A, Printz D, et al. CD20 up-regulation in pediatric B-cell precursor acute lymphoblastic leukemia during induction treatment: setting the stage for anti-CD20 directed immunotherapy. *Blood*. 2008;112:3982-3988. <http://dx.doi.org/10.1182/blood-2008-06-164129> PMID:18780832 PMID:PMC2581996
- Chevallier P, Pigneux A, Robillard N, et al. Rituximab for the treatment of adult relapsed/refractory CD20 positive B-ALL patients: a pilot series. *Leuk Res*. 2011;36:311-315. <http://dx.doi.org/10.1016/j.leukres.2011.11.010> PMID:22172463
- Ribera J, Garcia O, Grande C, et al. Promising results of specific immunochemotherapy in Burkitt/leukemia or lymphoma regardless of the HIV infections status: results of a phase 2 study. *Haematologica*. 2011;96:450-451.
- Intermesoli T, Rossi G, Delaini F, et al. Cure rates and toxicity vary according to age < versus > 55 years in B-ALL and Burkitt lymphoma treated with the German chemotherapy plus rituximab protocol: Italian study on over 100 patients. *Haematologica*. 2011;96:239.
- Hoelzer D, Hiddemann W, Baumann A, et al. High Survival Rate in Adult Burkitt's Lymphoma/Leukemia and Diffuse Large B-Cell Lymphoma with Mediastinal Involvement. *ASH Annual Meeting Abstracts*. 2007;110:518-.
- Thomas DA, Kantarjian H, Cortes J, et al. Long-Term Outcome after Hyper-CVAD and Rituximab Chemoimmunotherapy for Burkitt (BL) or Burkitt-Like (BLL) Leukemia/Lymphoma and Mature B-Cell Acute Lymphocytic Leukemia (B-ALL). *ASH Annual Meeting Abstracts*. 2007;110:2825.
- Rizzieri DA, Johnson JL, Byrd JC, et al. Improved efficacy using rituximab and brief duration, high intensity chemotherapy with filgrastim support for Burkitt or aggressive lymphomas: cancer and Leukemia Group B study 10A 002. *British Journal of Haematology*. 2014;165:102-111. <http://dx.doi.org/10.1111/bjh.12736> PMID:24428673
- Dunleavy K, Pittaluga S, Maeda LS, et al. Dose-Adjusted EPOCH-Rituximab Therapy in Primary Mediastinal B-Cell Lymphoma. *New England Journal of Medicine*. 2013;368:1408-1416. <http://dx.doi.org/10.1056/NEJMoa1214561> PMID:23574119
- Corazzelli G, Frigeri F, Russo F, et al. RD-CODOX-M/IVAC with rituximab and intrathecal liposomal cytarabine in adult Burkitt lymphoma and unclassifiable highly aggressive B-cell lymphoma. *British Journal of Haematology*. 2012;156:234-244. <http://dx.doi.org/10.1111/j.1365-2141.2011.08947.x> PMID:22098541
- Ribrag V, Koscielny S, Bouabdallah K, et al. Addition of Rituximab Improves Outcome of HIV Negative Patients with Burkitt Lymphoma Treated with the Lmba Protocol: Results of the Randomized Intergroup (GRAALL-Lysa) LMBA02 Protocol. (IGR sponsored LMBA02, NCT00180882). 54th Annual Meeting of the American Society of Hematology; 2012.
- Thomas DA, O'Brien S, Faderl S, et al. Chemoimmunotherapy with a modified hyper-CVAD and rituximab regimen improves outcome in de novo Philadelphia chromosome-negative precursor B-lineage acute lymphoblastic leukemia. *J Clin Oncol*. 2010;28:3880-3889. <http://dx.doi.org/10.1200/JCO.2009.26.9456> PMID:20660823 PMID:PMC2940403
- Thomas DA, Kantarjian H, Jorgensen JL, et al. Outcomes Continue to Be Favorable for De Novo Philadelphia Chromosome Negative B-Lymphoblastic Leukemia (ALL) After Therapy with Hyper-

- CVAD (with or without Rituximab) Regimen. 54th Annual Meeting of the American Society of Hematology; 2012.
24. Hoelzer D, Huettmann A, Kaul F, et al. Immunochemotherapy with Rituximab Improves Molecular CR Rate and Outcome In CD20+ B-Lineage Standard and High Risk Patients; Results of 263 CD20+ Patients Studied Prospectively In GMALL Study 07/2003. ASH Annual Meeting Abstracts. 2010;116:170.
  25. Mannelli F, Gianfaldoni G, Intermoli T, et al. CD20 expression has no prognostic role in Philadelphia-negative B-precursor acute lymphoblastic leukemia: new insights from the molecular study of minimal residual disease. *Haematologica*. 2011. PMID:22058217
  26. Jabbour E, Kantarjian HM, Thomas DA, et al. Phase II study of the hyper-CVAD regimen in combination with ofatumumab as frontline therapy for adults with CD-20 positive ALL. *ASCO Meeting Abstracts*. 2014;32:7065.
  27. Leonard JP, Goldenberg DM. Preclinical and clinical evaluation of epratuzumab (anti-CD22 IgG) in B-cell malignancies. *Oncogene*. 2007;26:3704-3713. <http://dx.doi.org/10.1038/sj.onc.1210370> PMID:17530024
  28. Raetz EA, Cairo MS, Borowitz MJ, et al. Chemoimmunotherapy reinduction with epratuzumab in children with acute lymphoblastic leukemia in marrow relapse: a Children's Oncology Group Pilot Study. *J Clin Oncol*. 2008;26:3756-3762. <http://dx.doi.org/10.1200/JCO.2007.15.3528> PMID:18669463 PMID:PMC2654811
  29. Raetz EA, Cairo MS, Borowitz MJ, et al. Reinduction Chemoimmunotherapy with Epratuzumab in Relapsed Acute Lymphoblastic Leukemia (ALL) in Children, Adolescents and Young Adults: Results From Children's Oncology Group (COG) Study ADVL04P2. ASH Annual Meeting Abstracts. 2011;118:573-.
  30. Advani A, McDonough S, Coutre S, et al. Southwest Oncology Group Study S0910: A Phase 2 Trial of Clofarabine/ Cytarabine/ Epratuzumab for Relapsed/ Refractory Acute Lymphocytic Leukemia. ASH Annual Meeting Abstracts. 2012;120:2603-.
  31. Advani AS, Gundacker HM, Sala-Torra O, et al. Southwest Oncology Group Study S0530: a phase 2 trial of clofarabine and cytarabine for relapsed or refractory acute lymphocytic leukaemia. *Br J Haematol*. 2010;151:430-434. <http://dx.doi.org/10.1111/j.1365-2141.2010.08387.x> PMID:21113977 PMID:PMC3058291
  32. Chevallier P, Eugene T, Robillard N, et al. Phase 1 dose-escalation study of 90yttrium-labeled anti-DC22 Epratuzumab Tetraxetan in adult with refractory/relapsed CD22+ B-cell Acute Lymphoblastic Leukemia (B-ALL). ASH Annual meeting. San Francisco; 2014.
  33. Chevallier P, Huguot F, Raffoux E, et al. Chemoimmunotherapy combining vincristine, dexamethasone and Epratuzumab (hLL2) as salvage regimen for holder relapsed/refractory, CD22+ Acute Lymphoblastic Leukemia (B-ALL) patients: results of the French non-intensive phase 2 prospective Cheprall Study. ASH Annual Meeting. San Francisco; 2014.
  34. Tibes R, Keating MJ, Ferrajoli A, et al. Activity of alemtuzumab in patients with CD52-positive acute leukemia. *Cancer*. 2006;106:2645-2651. <http://dx.doi.org/10.1002/cncr.21901> PMID:16688777
  35. Angiolillo AL, Yu AL, Reaman G, Ingle AM, Secola R, Adamson PC. A phase II study of Campath-1H in children with relapsed or refractory acute lymphoblastic leukemia: a Children's Oncology Group report. *Pediatr Blood Cancer*. 2009;53:978-983. <http://dx.doi.org/10.1002/pbc.22209> PMID:19637330 PMID:PMC3120889
  36. Stock W, Sanford B, Lozanski G, et al. Alemtuzumab can be Incorporated Into Front-Line Therapy of Adult Acute Lymphoblastic Leukemia (ALL): Final Phase I Results of a Cancer and Leukemia Group B Study (CALGB 10102). ASH Annual Meeting Abstracts. 2009;114:838.
  37. Thorson JS, Sievers EL, Ahlert J, et al. Understanding and exploiting nature's chemical arsenal: the past, present and future of calicheamicin research. *Curr Pharm Des*. 2000;6:1841-1879. <http://dx.doi.org/10.2174/1381612003398564> PMID:11102565
  38. Kantarjian H, Thomas D, Jorgensen J, et al. Inotuzumab ozogamicin, an anti-CD22-calicheamicin conjugate, for refractory and relapsed acute lymphocytic leukaemia: a phase 2 study. *Lancet Oncol*. 2012;13:403-411. [http://dx.doi.org/10.1016/S1470-2045\(11\)70386-2](http://dx.doi.org/10.1016/S1470-2045(11)70386-2)
  39. O'Brien SM, Thomas DA, Jorgensen JL, et al. Experience with 2 Dose Schedules of Inotuzumab Ozogamicin, Single Dose, and Weekly, in Refractory-Relapsed Acute Lymphocytic Leukemia (ALL). 54th Annual Meeting of the American Society of Hematology; 2012.
  40. Jabbour E, O'Brien S, Sasaki K, et al. Prognostic factors for outcome in patients (pts) with refractory and relapsed Acute Lymphocytic Leukemia (ALL) treated with Inotuzumab Ozogamicin (IO), a CD22 monoclonal antibody. ASH Annual meeting; 2014.
  41. Jabbour E, O'Brien S, Thomas D, et al. Inotuzumab Ozogamicin in combination with low-intensity chemotherapy (mini-hyper-CVD) as salvage therapy for adult patients with refractory/relapse (R/R) Acute Lymphoblastic Leukemia (ALL). ASH Annual meeting; 2014.
  42. Jabbour E, O'Brien S, Thomas D, et al. Inotuzumab Ozogamicin in combination with low-intensity chemotherapy (mini-hyper-CVAD) as frontline therapy for older patients (>60 years) with Acute Lymphoblastic Leukemia (ALL). ASH Annual Meeting. San Francisco; 2014.
  43. DeAngelo DJ, Stock W, Petersdorf SH, et al. Weekly Inotuzumab Ozogamicin in Adult Patients with Relapsed or Refractory CD22-Positive Acute Lymphoblastic Leukemia. 54th Annual Meeting of the American Society of Hematology; 2012.
  44. Kebriaei P, Wilhelm K, Ravandi F, et al. Feasibility of Allografting in Patients with Advanced Acute Lymphoblastic Leukemia After Salvage Therapy With Inotuzumab Ozogamicin. *Clinical Lymphoma Myeloma and Leukemia*. 2013;13:296-301. <http://dx.doi.org/10.1016/j.clml.2012.12.003> PMID:23313065 PMID:PMC4102410
  45. Mussai F, Campana D, Bhojwani D, et al. Cytotoxicity of the anti-CD22 immunotoxin HA22 (CAT-8015) against paediatric acute lymphoblastic leukaemia. *Br J Haematol*. 2010;150:352-358. <http://dx.doi.org/10.1111/j.1365-2141.2010.08251.x> PMID:20528877
  46. Wayne AS, Kreitman RJ, Findley HW, et al. Anti-CD22 immunotoxin RFB4(dsFv)-PE38 (BL22) for CD22-positive hematologic malignancies of childhood: preclinical studies and phase I clinical trial. *Clin Cancer Res*. 2010;16:1894-1903. <http://dx.doi.org/10.1158/1078-0432.CCR-09-2980> PMID:20215554 PMID:PMC2840067
  47. Hoelzer D. Novel antibody-based therapies for acute lymphoblastic leukemia. *Hematology Am Soc Hematol Educ Program*. 2011;2011:243-249. <http://dx.doi.org/10.1182/asheducation-2011.1.243> PMID:22160041
  48. Wei H, Xiang L, Wayne AS, et al. Immunotoxin resistance via reversible methylation of the DPH4 promoter is a unique survival strategy. *Proc Natl Acad Sci U S A*. 2012;109:6898-6903. <http://dx.doi.org/10.1073/pnas.1204523109> PMID:22509046 PMID:PMC3345006
  49. Barta SK, Zou Y, Schindler J, et al. Synergy of sequential administration of a deglycosylated ricin A chain-containing combined anti-CD19 and anti-CD22 immunotoxin (Combotox) and cytarabine in a murine model of advanced acute lymphoblastic leukemia. *Leuk Lymphoma*. 2012;53:1999-2003. <http://dx.doi.org/10.3109/10428194.2012.679267> PMID:22448921 PMID:PMC3808884
  50. Schindler J, Gavavelli S, Ravandi F, et al. A phase I study of a combination of anti-CD19 and anti-CD22 immunotoxins (Combotox) in adult patients with refractory B-lineage acute lymphoblastic leukaemia. *Br J Haematol*. 2011;154:471-476. <http://dx.doi.org/10.1111/j.1365-2141.2011.08762.x> PMID:21732928 PMID:PMC3877839
  51. Blanc V, Bousseau A, Caron A, Carrez C, Lutz RJ, Lambert JM. SAR3419: an anti-CD19-Maytansinoid Immunoconjugate for the treatment of B-cell malignancies. *Clin Cancer Res*. 2011;17:6448-6458. <http://dx.doi.org/10.1158/1078-0432.CCR-11-0485> PMID:22003072
  52. Carol H, Szymanska B, Evans K, et al. The Anti-CD19 Antibody Drug Conjugate SAR3419 Prevents Hematolymphoid Relapse Postinduction Therapy in Preclinical Models of Pediatric Acute Lymphoblastic Leukemia. *Clinical Cancer Research*. 2013;19:1795-1805. <http://dx.doi.org/10.1158/1078-0432.CCR-12-3613> PMID:23426279 PMID:PMC3618498
  53. Sztatowski TP, Dodge RK, Reynolds C, et al. Lineage specific treatment of adult patients with acute lymphoblastic leukemia in first remission with anti-B4-blocked ricin or high-dose cytarabine: Cancer and Leukemia Group B Study 9311. *Cancer*. 2003;97:1471-1480. <http://dx.doi.org/10.1002/cncr.11219> PMID:12627512
  54. Topp MS, Kufer P, Gokbuget N, et al. Targeted therapy with the T-cell-engaging antibody blinatumomab of chemotherapy-refractory minimal residual disease in B-lineage acute lymphoblastic leukemia patients results in high response rate and prolonged

- leukemia-free survival. *J Clin Oncol.* 2011;29:2493-2498. <http://dx.doi.org/10.1200/JCO.2010.32.7270> PMID:21576633
55. Klinger M, Brandl C, Zugmaier G, et al. Immunopharmacologic response of patients with B-lineage acute lymphoblastic leukemia to continuous infusion of T cell-engaging CD19/CD3-bispecific BiTE antibody blinatumomab. *Blood.* 2012;119:6226-6233. <http://dx.doi.org/10.1182/blood-2012-01-400515> PMID:22592608
  56. Topp MS, Gokbuget N, Zugmaier G, et al. Long-term follow-up of hematologic relapse-free survival in a phase 2 study of blinatumomab in patients with MRD in B-lineage ALL. *Blood.* 2012;120:5185-5187. <http://dx.doi.org/10.1182/blood-2012-07-441030> PMID:23024237
  57. Ladetto M, Brüggemann M, Monitillo L, Ferrero S, Pepin F, Drandi D, Barbero D, Palumbo A, Passera R, Boccadoro M, Ritgen M, Gökbuget N, Zheng J, Carlton V, Trautmann H, Faham M, Pott C. Next-generation sequencing and real-time quantitative PCR for minimal residual disease detection in B-cell disorders. *Leukemia.* 2014 Jun;28(6):1299-307. <http://dx.doi.org/10.1038/leu.2013.375> PMID:24342950
  58. Gokbuget N, Dombret H, Bonifacio M, et al. BLAST: a confirmatory, single arm, phase 2 study of Blinatumomab, a bispecific T-cell engager (BiTE) antibody constructor, in patients with minimal residual disease B-precursor Acute Lymphoblastic Leukemia (ALL). *ASH Annual Meeting*; 2014.
  59. Topp M, Gokbuget N, Zugmaier G, et al. Effect of anti-CD19 BiTE blinatumomab on complete remission rate and overall survival in adult patients with relapsed/refractory B-precursor ALL. *ASCO Meeting Abstracts* 2012 30 6500
  60. Topp MS, Gökbuget N, Stein AS, et al. Open-label, single arm, multicenter confirmatory phase 2 study of the BiTE antibody Blinatumomab in patients with relapsed/refractory B-precursor Acute Lymphoblastic Leukemia. 19th Congress of European Hematology Association; 2014.
  61. Gokbuget N, Kantarjian H, Brüggemann M, et al. An evaluation of molecular response in a phase 2 open-label, multicenter confirmatory study in patients (pts) with relapsed/refractory B-precursor Acute Lymphoblastic Leukemia (r/r ALL) receiving treatment with the BiTE Antibody constructor Blinatumomab. *ASH Annual Meeting*; 2014.
  62. Stein A, Topp M, Gokbuget N, et al. Allogeneic hematopoietic stem cell transplantation following anti-CD19 BiTE Blinatumomab in adult patient with relapse/refractory B-precursor Acute Lymphoblastic Leukemia (ALL). *ASH Annual Meeting*; 2014.
  63. Brentjens RJ, Davila ML, Riviere I, et al. CD19-targeted T cells rapidly induce molecular remissions in adults with chemotherapy-refractory acute lymphoblastic leukemia. *Sci Transl Med.* 2013;5:177ra138.
  64. Park JH, Sauter C, Brentjens R. Cellular therapies in acute lymphoblastic leukemia. *Hematol Oncol Clin North Am.* 2011;25:1281-1301. <http://dx.doi.org/10.1016/j.hoc.2011.09.015> PMID:22093587 PMID:PMC3551618
  65. Brentjens RJ, Santos E, Nikhamin Y, et al. Genetically targeted T cells eradicate systemic acute lymphoblastic leukemia xenografts. *Clin Cancer Res.* 2007;13:5426-5435. <http://dx.doi.org/10.1158/1078-0432.CCR-07-0674> PMID:17855649
  66. Grupp SA, Kalos M, Barrett D, et al. Chimeric antigen receptor-modified T cells for acute lymphoid leukemia. *N Engl J Med.* 2013;368:1509-1518. <http://dx.doi.org/10.1056/NEJMoa1215134> PMID:23527958 PMID:PMC4058440
  67. Doubrovina E, Oflaz-Sozmen B, Prockop SE, et al. Adoptive immunotherapy with unselected or EBV-specific T cells for biopsy-proven EBV+ lymphomas after allogeneic hematopoietic cell transplantation. *Blood.* 2012;119:2644-2656. <http://dx.doi.org/10.1182/blood-2011-08-371971> PMID:22138512 PMID:PMC3311278
  68. Leen AM, Myers GD, Sili U, et al. Monoculture-derived T lymphocytes specific for multiple viruses expand and produce clinically relevant effects in immunocompromised individuals. *Nat Med.* 2006;12:1160-1166. <http://dx.doi.org/10.1038/nm1475> PMID:16998485
  69. Marin V, Kakuda H, Dander E, et al. Enhancement of the anti-leukemic activity of cytokine induced killer cells with an anti-CD19 chimeric receptor delivering a 4-1BB-zeta activating signal. *Exp Hematol.* 2007;35:1388-1397. <http://dx.doi.org/10.1016/j.exphem.2007.05.018> PMID:17656004
  70. Shah NN, Stetler-Stevenson M, Sabatino M, et al. Anti-CD19 Chimeric Antigen Receptor (CAR) T Cells Produce Complete Responses With Acceptable Toxicity But Without Chronic B-Cell Aplasia In Children With Relapsed Or Refractory Acute Lymphoblastic Leukemia (ALL) Even After Allogeneic Hematopoietic Stem Cell Transplantation. *Blood.* 2013;122:68-68.
  71. Frey NV, Aplenc R, Barrett DM, et al. T Cells Engineered With a Chimeric Antigen Receptor (CAR) Targeting CD19 (CTL019) Produce Significant In Vivo Proliferation, Complete Responses and Long-Term Persistence Without Gvhd In Children and Adults With Relapsed, Refractory ALL. *Blood.* 2013;122:67-67.
  72. Cruz CR, Micklethwaite KP, Savoldo B, et al. Infusion of donor-derived CD19-redirected virus-specific T cells for B-cell malignancies relapsed after allogeneic stem cell transplant: a phase 1 study. *Blood.* 2013;122:2965-2973. <http://dx.doi.org/10.1182/blood-2013-06-506741> PMID:24030379 PMID:PMC3811171
  73. Haso W, Lee DW, Shah NN, et al. Anti-CD22-chimeric antigen receptors targeting B-cell precursor acute lymphoblastic leukemia. *Blood.* 2013;121:1165-1174. <http://dx.doi.org/10.1182/blood-2012-06-438002> PMID:23243285 PMID:PMC3575759
  74. Maude SL, Frey N, Shaw PA, et al. Chimeric antigen receptor T cells for sustained remissions in leukemia. *N Engl J Med.* 2014;371:1507-1517. <http://dx.doi.org/10.1056/NEJMoa1407222> PMID:25317870
  75. Lee DW, Kochenderfer JN, Stetler-Stevenson M, et al. T cells expressing CD19 chimeric antigen receptors for acute lymphoblastic leukaemia in children and young adults: a phase 1 dose-escalation trial. *Lancet.* 2014; [http://dx.doi.org/10.1016/S0140-6736\(14\)61403-3](http://dx.doi.org/10.1016/S0140-6736(14)61403-3)