



**Review Article**

**Importance of Classical Morphology in the Diagnosis of Myelodysplastic Syndrome**

Rosangela Invernizzi, Federica Quaglia and Matteo Giovanni Della Porta

Department of Internal Medicine, University of Pavia, IRCCS Policlinico San Matteo Foundation, Pavia, Italy

**Competing interests:** The authors have declared that no competing interests exist.

**Abstract.** Myelodysplastic syndromes (MDS) are hematopoietic stem cell disorders characterized by dysplastic, ineffective, clonal and neoplastic hematopoiesis. MDS represent a complex hematological problem: differences in disease presentation, progression and outcome have necessitated the use of classification systems to improve diagnosis, prognostication, and treatment selection. However, since a single biological or genetic reliable diagnostic marker has not yet been discovered for MDS, quantitative and qualitative dysplastic morphological alterations of bone marrow precursors and peripheral blood cells are still fundamental for diagnostic classification. In this paper, World Health Organization (WHO) classification refinements and current minimal diagnostic criteria proposed by expert panels are highlighted, and related problematic issues are discussed. The recommendations should facilitate diagnostic and prognostic evaluations in MDS and selection of patients for new effective targeted therapies. Although, in the future, morphology should be supplemented with new molecular techniques, the morphological approach, at least for the moment, is still the cornerstone for the diagnosis and classification of these disorders.

**Citation:** Invernizzi R., Quaglia F., Della Porta M.G. Importance of classical morphology in the diagnosis of myelodysplastic syndrome. *Mediterr J Hematol Infect Dis* 2015, 7(1): e2015035, DOI: <http://dx.doi.org/10.4084/MJHID.2015.035>

**Published:** May 1, 2015

**Received:** March 25, 2015

**Accepted:** April 23, 2015

This is an Open Access article distributed under the terms of the Creative Commons Attribution License (<http://creativecommons.org/licenses/by/2.0>), which permits unrestricted use, distribution, and reproduction in any medium, provided the original work is properly cited.

Correspondence to: Rosangela Invernizzi, Clinica Medica 3, Fondazione IRCCS Policlinico San Matteo, Viale Golgi 19, 27100 Pavia, Italy. Tel.: +39 0382 502160. Fax: +39 0382 526223. E-mail: [r.invernizzi@smatteo.pv.it](mailto:r.invernizzi@smatteo.pv.it)

**Introduction.** Myelodysplastic syndromes (MDS) are clonal hematopoietic stem cell disorders characterized by dysplastic, ineffective and neoplastic hematopoiesis. The risk of evolution to acute myeloid leukemia (AML) is variable, and the clinical outcome is greatly heterogeneous. Therefore, MDS constitute a complex hematological problem that gives rise to difficulties in diagnosis and therapeutic decision-making.<sup>1</sup> Since a single biological or genetic reliable diagnostic marker has not yet been discovered for MDS, quantitative and qualitative dysplastic alterations of bone marrow precursors and of peripheral blood cells are still fundamental for diagnostic classifications.<sup>2</sup> While the detection of increased blast cells may facilitate the diagnosis in advanced forms, in the early forms, especially with modest morphological abnormalities, a correct diagnosis is based mainly on the exclusion of other diseases. Some bone marrow failure syndromes

can indeed mimic the MDS,<sup>3,4</sup> and the formulation of a correct diagnosis is fundamental for both prognostic evaluation and therapeutic approach.

In this review the meaning of morphology in MDS is examined; World Health Organization (WHO) classification refinements and current minimal morphological criteria for defining dysplastic involvement are highlighted, and several problematic issues are discussed.

**Diagnosis and Classification.** Currently, the reference classification of MDS is still the WHO classification, published in 2001 and updated in 2008.<sup>5-7</sup> This classification system is based on an integrated multidisciplinary approach that uses all available information (morphology, cytochemistry, immunophenotype, genetics, clinical aspects) to define biologically homogeneous and clinically relevant

entities, that can be usefully applied in clinical practice. The WHO classification improved the prognostic value of the former FAB classification,<sup>8</sup> by recognizing more specific categories on the basis of cytogenetic findings as well as cellular morphology and allowed to evaluate more accurately emerging therapies that target specific genetic abnormalities.<sup>9,10</sup>

The suspicion of MDS arises on the basis of an abnormal blood count with evidence of different combinations of anemia, neutropenia, and thrombocytopenia in an appropriate clinical setting. Anemia is often macrocytic, associated with a significantly reduced reticulocyte count. Obviously, all causes of reactive cytopenia/dysplasia should be excluded as well as other clonal stem cell disorders and congenital abnormalities (**Table 1**). The minimal diagnostic criteria for MDS include the presence of bone marrow specific alterations, i.e. one or more of the following characteristics: dysplasia in at least 10% of at least one of the major hematopoietic lineages, at least 15% ring sideroblasts or 5-19% myeloblasts in bone marrow smears. Certain chromosomal abnormalities detected by conventional karyotyping or FISH in the presence of a refractory cytopenia, but no morphological evidence of dysplasia, are considered presumptive evidence for MDS (**Table 2**).<sup>6,11,12</sup> Since morphology alone is often insufficient to reach a final diagnosis, it should be integrated, but not replaced, by other investigations such as flow cytometry, molecular studies, in vitro culture of hematopoietic

progenitors.<sup>2,13,14</sup> However, if multilineage dysplasia, chromosomal aberrations and proof of clonality are absent, the diagnosis may be difficult.

On the basis of the proportion of peripheral blood and bone marrow blasts, defined by a morphological examination, two broad categories of MDS are recognized: forms with <2% peripheral blood blasts and <5% bone marrow blasts (lower risk subtypes), including refractory cytopenias with unilineage dysplasia (RCUD), refractory anemia with ring sideroblasts (RARS), refractory cytopenia with multilineage dysplasia (RCMD), myelodysplastic syndrome-unclassified (MDS-U) and MDS associated with isolated del(5q), and forms characterized by at least 2% peripheral blood blasts and/or at least 5% bone marrow blasts (higher risk subtypes), including refractory anemia with excess blasts-1 (RAEB-1) and RAEB-2 (**Table 3**). Chronic myelomonocytic leukemia (CMML), characterized by persistent monocytosis, is placed into the category of myelodysplastic/myeloproliferative neoplasms together with atypical chronic myeloid leukemia (ACML), *BCR-ABL1* negative, juvenile myelomonocytic leukemia (JMML) and refractory anemia with ring sideroblasts associated with marked thrombocytosis (RARS-T), which is still a provisional entity.<sup>15,16</sup>

**Morphological Features.** The diagnosis of MDS is mainly based on morphological findings of peripheral blood and bone marrow.<sup>17-20</sup> Morphological

**Table 1.** Differential diagnosis.

<ul style="list-style-type: none"> <li>• Therapy-related MDS (cytotoxic therapy, irradiation)</li> <li>• Drug-induced cytopenias</li> <li>• B12/folate deficiency, zinc/copper deficiency</li> <li>• Excessive alcohol intake</li> <li>• Exposure to heavy metals (lead, arsenic)</li> <li>• Infections (HIV, Epstein-Barr virus, hepatitis C, parvovirus, leishmania)</li> <li>• Hemophagocytic lymphohistiocytosis</li> <li>• Anemia of chronic disorders (infection, inflammation, cancer)</li> <li>• Autoimmune cytopenia</li> <li>• Metabolic disorders (liver failure, kidney failure)</li> <li>• Other hematopoietic stem cell disorders (acute myeloid leukemia, myeloproliferative neoplasms, aplastic anemia, paroxysmal nocturnal hemoglobinuria, LGL leukemia)</li> <li>• Constitutional disorders (congenital dyserythropoietic anemia, sideroblastic anemia, Fanconi's anemia, Down syndrome)</li> </ul>
--

**Table 2.** Recurrent chromosomal abnormalities and their frequency in MDS.<sup>6</sup>

Unbalanced abnormality	Frequency (%)	Balanced abnormality	Frequency (%)
+8	10	t(11;16)(q23;p13.3)*	
-7 or del(7q)*	10	t(3;21)(q26.2;q22.1)*	
-5 or del(5q)*	10	t(1;3)(p36.3;q21.2)*	
del(20q)	5-8	t(2;11)(p21;q23)*	1
-Y	5	inv(3)(q21q26.2)*	1
i(17q) or t(17p)*	3-5	t(6;9)(p23;q34)*	1
-13 or del(13q)*	3		
del(11q)*	3		
del(12p) or t(12p)*	3		
del(9q)*	1-2		
idic(X)(q13)*	1-2		

\* In the setting of persistent cytopenia of undetermined origin, these abnormalities are considered presumptive evidence of MDS.

**Table 3.** WHO-2008 classification of MDS.<sup>6</sup>

Name	Abbreviation	Peripheral blood	Bone marrow	Proportion of MDS patients
Refractory cytopenia with unilineage dysplasia	RCUD	<1% blasts	<5% blasts	10%-20%
Refractory anemia	RA	Anemia	Dysplasia in $\geq 10\%$ cells	
Refractory neutropenia	RN	Neutropenia	Unilineage erythroid dysplasia	
Refractory thrombocytopenia	RT	Thrombocytopenia	Unilineage granulocytic dysplasia Unilineage megakaryocytic dysplasia	
Refractory anemia with ring sideroblasts	RARS	Anemia No blasts	<5% blasts Unilineage erythroid dysplasia $\geq 15\%$ of erythroid precursors are ring sideroblasts	3%-11%
Refractory cytopenias with multilineage dysplasia	RCMD	<1% blasts Cytopenia(s) No Auer rods	<5% blasts Multilineage dysplasia $\pm$ ring sideroblasts No Auer rods	30%
MDS, unclassifiable	MDS-U	Cytopenias $\leq 1\%$ blasts	Dysplasia and <5% blasts If no dysplasia, MDS-associated karyotype	?
MDS-associated with isolated del(5q)	Del(5q)	Anemia Normal or high platelet count <1% blasts	Normal to increased megakaryocytes with hypolobated nuclei Isolated del(5q) <5% blasts No Auer rods	Uncommon
Refractory anemia with excess blasts, type 1	RAEB-1	Cytopenia(s) <5% blasts No Auer rods	Uni- or multilineage dysplasia 5-9% blasts No Auer rods	40%
Refractory anemia with excess blasts, type 2	RAEB-2	Cytopenia(s) 5-19% blasts $\pm$ Auer rods	Uni- or multilineage dysplasia 10-19% blasts $\pm$ Auer rods	

examination has several advantages: it is a simple, technically easy, not expensive method, which gives quick results; moreover, it has prognostic importance, and should be supplemented, but not replaced, by other tests. The morphological examination requires peripheral blood smear, bone marrow aspirate, and bone marrow trephine biopsy.

Peripheral blood and bone marrow specimens should be collected before any definitive therapy. No case of MDS should be reclassified while the patient is on growth factor therapy. Since prolonged exposure to anticoagulants can cause artifacts, the slides for the assessment of dysplasia should be made from freshly obtained specimens. On bone marrow aspirate smears and/or biopsy touch preparations, MGG or similar staining and iron staining could possibly, but not necessarily, be supplemented by cytochemical dyes to identify bone marrow cells and maturation stages: myeloperoxidase and Sudan black detect myeloid cells by staining cytoplasmic granular contents and better identify Auer rods, periodic acid-Schiff detects lymphocytic cells and certain abnormal erythroid cells by staining cytoplasmic glycogen, esterases distinguish myelocytic from monocytic maturation stages. On bone

marrow aspirates, the cellularity should be enough to perform a 500 cells differential count, whereas, on peripheral blood smears, a differential count of 200-cell leukocyte is recommended. The blood and marrow smears should be examined for the percentages of blasts, dysplastic cells and ring sideroblasts. At least 100 erythroblasts, 100 granulocytic cells, and 30 megakaryocytes should be evaluated.<sup>6</sup>

**Assessment of Blasts.** An increase of blast cells has to be considered as a sign of myelodysplasia. An International Working Group on Morphology of MDS (IWGM-MDS) of hematopathologists and hematologists, in order to improve diagnostic accuracy, agreed on some recommendations for the definition and enumeration of blasts.<sup>21</sup> First, blast percentage should be determined by visual inspection. Flow cytometric assessment of CD34+ cells is not recommended, as not all blasts express CD34 antigen and flow cytometry analysis can be affected by peripheral blood dilution of the sample.<sup>6</sup> Myeloblasts, monoblasts, promonocytes, and megakaryoblasts should be counted as blasts; dysplastic megakaryocytes and proerythroblasts must not be counted as blasts

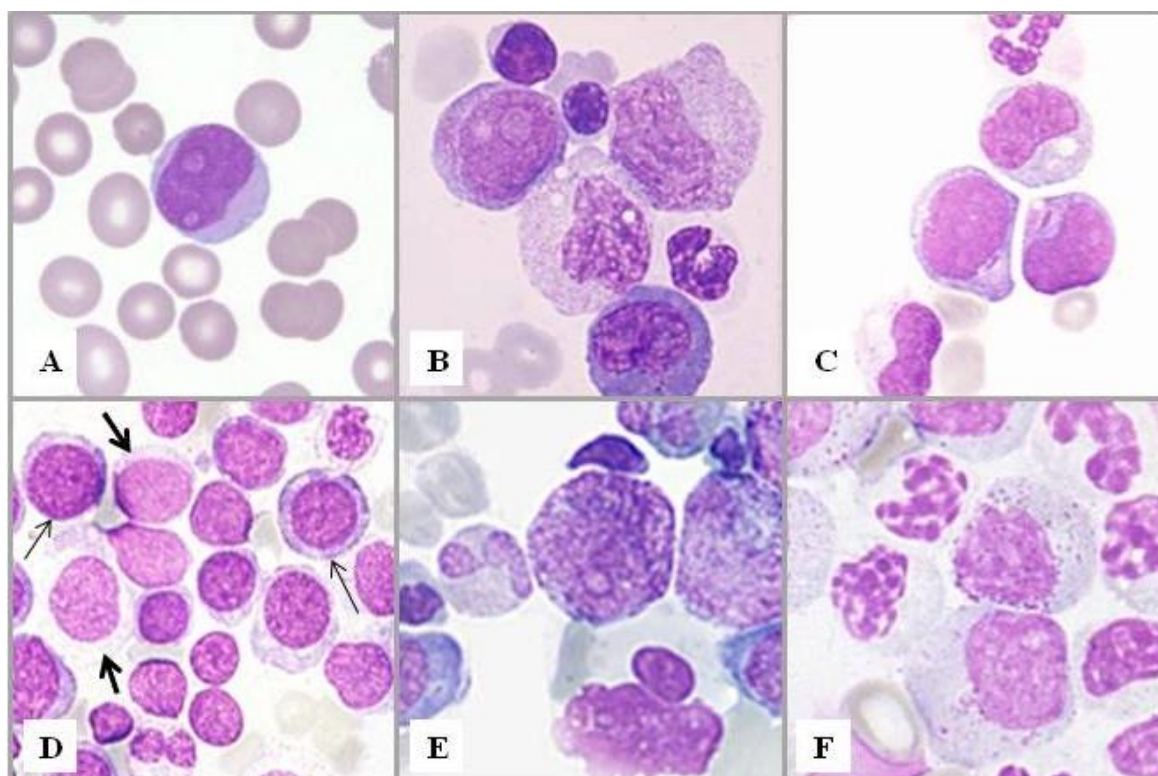
except in the rare cases of “pure” acute erythroleukemia. Blast lineage could be assessed by flow cytometry, cytochemistry or immunocytochemistry. In severely cytopenic patients, buffy coat smears of peripheral blood may facilitate performing the differential count. The diagnostic and prognostic importance of an accurate count of the blasts should be emphasized.<sup>22</sup> According to WHO, 20% bone marrow or peripheral blood blasts is the threshold for the diagnosis of AML, whereas, according to the revised International Prognostic Scoring System, the forms with <2% bone marrow blasts are to be distinguished from those with ≥2% blasts, as they have a better prognosis.<sup>23</sup> Moreover, they were included in the MDS-U subtype patients with 1% blasts in the blood and fewer than 5% blasts in the bone marrow.<sup>24</sup>

Blasts have variable size, ovoid or irregularly outlined nuclei with loose chromatin pattern and variable number of nucleoli, basophilic cytoplasm, with the absence of an evident Golgi zone. They are defined as granular or agranular and may contain Auer rods, whose presence allows the automatic diagnosis of RAEB-2. Myeloblasts showing strongly basophilic cytoplasm could be misinterpreted as immature erythroid precursors. Erythroid precursors, however, have relatively mature clumped chromatin and are often larger than myeloblasts at early stages. Granular

blasts should be distinguished from normal or dysplastic promyelocytes. Promyelocytes are usually characterized by a well recognizable Golgi zone; dysplastic promyelocytes, however, are often hyper- or hypogranulated and may present a less evident Golgi area than normal promyelocytes (**Figure 1**).

It is worth noting that in the forms with recurrent cytogenetic abnormalities, such as t(8;21)(q22;q22), inv(16)(p13.1q22) or t(16;16)(p13.1;q22) and t(15;17)(q22;q12) the diagnosis of AML should be made even with fewer than 20% bone marrow blasts. These forms are considered clinical-pathological-genetic entities with peculiar features.

**Assessment of Monocytic Cells.** The IWGM-MDS also defined the different maturation stages of monocytic cells.<sup>25</sup> A promonocyte differs from a monoblast for the irregular nuclear outline but has similar immature chromatin pattern; it is a blast equivalent and should be counted as such. Thus, the distinction between a monoblast and a promonocyte has no practical importance as they are regarded as having the same significance. An atypical/immature monocyte is characterized by a more condensed chromatin pattern and less evident nucleoli, but its distinction from a promonocyte can be very difficult. Monocytic cells can be better identified with the nonspecific esterase reaction. Monoblasts and



**Figure 1.** Bone marrow smears. Blast cells and dysplastic promyelocytes. **A)** A blast with agranular cytoplasm. **B)** A blast with some azurophilic granules scattered in its cytoplasm. This type of blasts is classified as granular irrespective of the number of granules. A granular blast can be distinguished from a promyelocyte by the less degree of chromatin clumping and the lack of a clear paranuclear area. Also apparent are, from top to bottom, a lymphocyte, a late erythroblast, two myelocytes, an agranular neutrophil with band nucleus and an eosinophil. **C)** Two blasts with a single Auer body in their cytoplasm. In MDS, the presence of an Auer body in a blast allows the automatic diagnosis of RAEB-2, according to WHO criteria. **D)** Agranular blasts (thick arrows) can be distinguished from early erythroid precursors (thin arrows) by the less degree of chromatin clumping and the smaller size. **E)** A hypergranular promyelocyte. **F)** Promyelocytes with scanty primary granules. Note also late granulocytic cells showing abnormal chromatin clumping and decreased secondary granules.

promonocytes, however, are rare in MDS, and their presence is rather indicative of CMML or AML with monocytic differentiation.

**Assessment of Dysplasia.** The precise recognition and quantification of dysplasia is critical for a correct application of the WHO classification for the following main reasons: WHO proposal introduced uni- versus multilineage dysplasia as a diagnostic criterion in MDS with fewer than 5% bone marrow blasts, increasing the prognostic value of the classification;<sup>26,27</sup> the finding, in an appropriate clinical setting, of dysplastic morphological alterations in at least 10% of the cells of at least one myeloid lineage is the most important criterion for the diagnosis of RCUD. This subtype is rather difficult to recognize because of the minimal percentage of blasts in the bone marrow and the low incidence of chromosome abnormalities.<sup>28,29</sup>

The dysplastic abnormalities of the cell nucleus and/or cytoplasm to be taken into account are listed in **Table 4** and illustrated in **Figure 2**. Whereas variable degrees of dyserythropoiesis are commonly observed in various hematological, as well as non-hematological disorders, the morphological abnormalities of the granulocytic and megakaryocytic series are more specific and significant for the diagnosis. However, no single morphological finding is diagnostic for MDS, that sometimes remains a diagnosis of exclusion.

**Dysgranulopoiesis.** Hypo-agranularity of neutrophils is considered a highly specific dysplastic feature; usually, it is more evident in peripheral blood smears

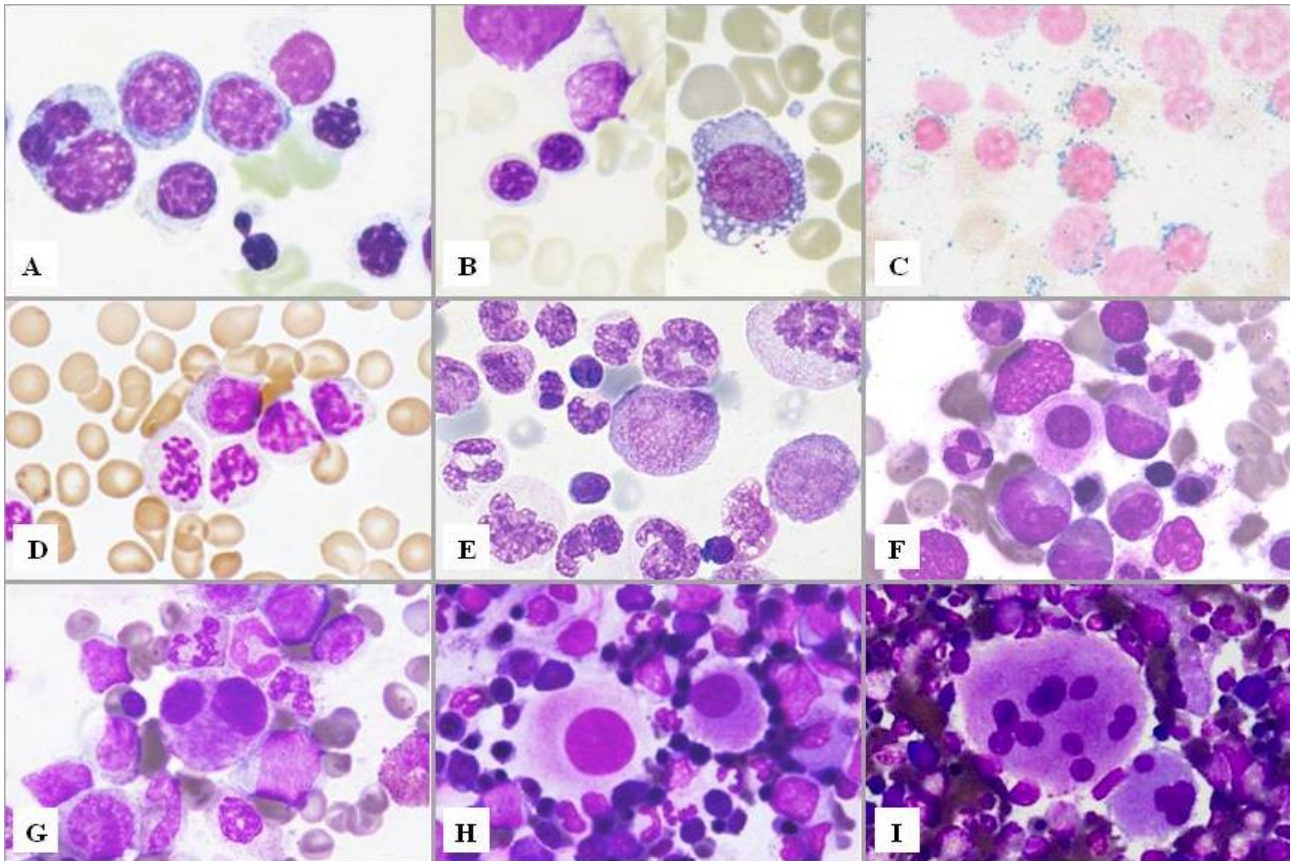
and better assessable with Sudan black or peroxidase reaction.<sup>30</sup> According to the recently published IWGM-MDS proposal for refining the definition of dysgranulopoiesis, neutrophils could be recognized as dysplastic in the presence of one of the following morphological features: at least 2/3 reduction of the content of granules, pseudo Pelger anomaly of the nucleus, not-Pelger abnormalities of nuclear segmentation, macropolycytes, abnormal clumping of the chromatin and the presence of more than four nuclear projections.<sup>31</sup>

**Dysmegakaryopoiesis.** Micromegakaryocytes are highly specific for dysmegakaryopoiesis, but there is still no consensus on their definition. It is recommended to consider as micromegakaryocyte a megakaryocyte of about the size of the surrounding myeloid cells, with scanty granular cytoplasm. Other categories of dysplastic megakaryocytes are illustrated in **Figure 2**: medium sized megakaryocytes with a single, ovoid, eccentric nucleus, pathognomonic of the 5q- syndrome; or with 2 nuclei of similar or different size, close one to another; mature megakaryocytes with numerous small round separated nuclei.

**Dyserythropoiesis and Ring Sideroblasts.** As already mentioned, morphological abnormalities of erythroid cells, as megaloblastic features and non-round nuclei, are commonly observed in many hematological as well as non-hematological disorders, and have a low diagnostic power. Only ring sideroblasts are considered highly specific dysplastic changes. Recommendations

**Table 4.** Morphological features of myelodysplasia.<sup>2,6</sup>

Lineage dysplasia	Peripheral blood	Bone marrow
<i>Dyserythropoiesis</i>	Anisocytosis Poikilocytosis Basophilic stippling	<i>Nuclear</i> Nuclear budding Internuclear bridging Karyorrhexis Multinuclearity Nuclear hyperlobation Megaloblastic changes <i>Cytoplasmic</i> Ring sideroblasts Vacuolization Periodic acid-Schiff positivity Inclusions Incomplete hemoglobinization Fringed cytoplasm
<i>Dysgranulopoiesis</i>	Granulocyte nuclear hypolobation (pseudo Pelger-Hüet) Granulocyte cytoplasmic hypo/degranulation Blasts	Anisocytosis Nuclear hypolobation (pseudo Pelger-Hüet) Irregular hypersegmentation Bizarre nuclear shapes Decreased granules; agranularity Pseudo Chediak-Higashi granules Auer rods
<i>Dysmegakaryocytopenia</i>	Platelet anisocytosis Giant platelets	Micromegakaryocytes Nuclear hypolobation Small binucleated elements Dispersed nuclei Degranulation



**Figure 2.** Bone marrow smears. Myelodysplastic features in hematopoietic cell lineages. **A)** Dyserythropoiesis. Erythroid hyperplasia with marked morphological abnormalities: megaloblastoid features; a trinucleated erythroblast (left); an erythroblast containing a Howell-Jolly body and an erythroblast with curiously lobulated nucleus. Late erythroblasts show ill-defined borders. **B)** Dyserythropoiesis. Left, internuclear bridge; right, a proerythroblast with vacuolated cytoplasm. **C)** Dyserythropoiesis. Perls' staining shows ring sideroblasts with numerous positive granules surrounding a third or more of the circumference of the nucleus. **D)** Dysgranulopoiesis. Neutrophils with nuclear hyplobation (acquired Pelger-Hüet anomaly), abnormal chromatin clumping and agranular cytoplasm. **E)** Dysgranulopoiesis. Anisocytosis of neutrophils that show giant nuclear segments of bizarre shape. Centre, note a promyelocyte with pink inclusions in its cytoplasm. **F)** Dismegakaryopoiesis. A micromegakaryocyte of about the size of the surrounding myeloid cells with scanty granular cytoplasm. **G)** Dismegakaryopoiesis. A small binucleate megakaryocyte. **H)** Dismegakaryopoiesis. Megakaryocytes with a single large round or oval nucleus and granular cytoplasm. **I)** Dismegakaryopoiesis. Megakaryocytes with many round separate nuclei.

for the definition of ring sideroblasts have been provided by the IWGM-MDS.<sup>21</sup> They are defined as erythroblasts characterized by at least 5 siderotic granules surrounding at least a third of the nuclear circumference, as a result of the iron accumulation within mitochondria, including some deposited as mitochondrial ferritin.<sup>32</sup> A high microscopic magnification is necessary to distinguish these granules. In some cases, ring sideroblasts constitute <15% of erythroid precursors: in such cases the diagnosis of MDS with RS would not be possible. However, ring sideroblasts would be considered as unequivocal expression of dyserythropoiesis. On the contrary, type 1 sideroblasts, characterized by <5 siderotic granules, are also present in the normal bone marrow, whereas type 2 sideroblasts show at least five non-perinuclear siderotic granules. In type 1 and type 2 sideroblasts, siderotic granules represent aggregates of ferritin molecules that are stored in lysosomes.

**Erythroid Predominant MDS (MDS-E).** Recently, the term of MDS-E or MDS Ery has been proposed to indicate forms of MDS with marked erythroid

hyperplasia. Marked erythroid hyperplasia (50% or greater) with or without left-shifted erythroid maturation can be seen in approximately 15% of patients with MDS and is often associated with the presence of ring sideroblasts.<sup>33</sup> In this condition, the count of blasts should be performed on non-erythroid cells, excluding lymphocytes and plasma cells, and for the diagnosis of MDS, it should be lower than 20%. There is an ongoing discussion regarding the subclassification of MDS-E since low-risk MDS such as RA may be upgraded to a higher risk category if blasts were calculated as a percentage of non-erythroid cells.<sup>34,35</sup> Thus, once the diagnosis of MDS is established, blast enumeration should be derived from all nucleated marrow cells. On the other hand, similar demographic and laboratory characteristics were reported in MDS-E in comparison with MDS cases with less than 50% erythroid precursors.

**Problematic Issues.** The problems in the morphological diagnosis of MDS are mainly due to the non-specificity of dysplastic changes. Morphological alterations may be observed even in healthy bone

marrow and in patients with non-clonal disorders; moreover, poor quality of marrow specimens and various artifacts may cause misinterpretation. On the other hand, recent studies have demonstrated discrepancy in morphological diagnosis in rather high proportions of cases as well as low reproducibility of the WHO 2008 criteria. Unfortunately, unanimous agreement on the type of morphological alterations that characterize MDS and on the threshold to be considered is still missing.<sup>36</sup>

Several studies have addressed the impact of the single morphological abnormalities and the degree of dysplasia on prognosis, and grading systems have been proposed to increase the diagnostic accuracy of MDS.<sup>26,29,37-39</sup>

A Japanese- German study concerning patients with MDS without excess blasts, 5q-syndrome excluded, showed the adverse prognostic significance of three parameters: the presence of at least 10% of micromegakaryocytes, dysmegakaryocytopoiesis > 40% and dysgranulopoiesis >10%. The authors suggested using these threshold values for the identification of multilineage dysplasia<sup>26</sup>. In a very detailed cytomorphological study on 3156 patients of the Düsseldorf register, no differences were observed in the frequency of dysplastic changes in relation to the WHO subtype of MDS and no single morphological abnormality had prognostic significance. Also, these authors recommended using 40% as a threshold value for dysmegakaryopoiesis.<sup>40</sup>

On the other hand, dysplastic features may also be observed in the normal bone marrow, as reported by some authors in the late '90s.<sup>41,42</sup> A more recent work has shown dysgranulopoiesis >10% in 46% of the bone marrow aspirates from 120 healthy donors, with multilineage dysplasia in 26% of the subjects; however, the counting of cells with pseudo Pelger anomaly and micromegakaryocytes did not exceed 10% and total dysmegakaryopoiesis 40%. The concordance rate between the four investigators was modest in dysgranulopoiesis but poor in dyserythropoiesis and dysmegakaryopoiesis; raising the threshold from 10% to an arbitrary 20% for all lineages led to a higher concordance rate. In conclusion, the 10% cut-off for dyshematopoietic cells is questionable in patients without cytopenia and should be revised for future consensus recommendations.<sup>43</sup> Interestingly, another study showed discordance in the morphological diagnosis between the reference and peripheral centers in 12% of 915 MDS cases referred to MD Anderson Cancer Center, with a majority reclassified as having higher-risk disease with implications for therapy selection and prognosis calculation.<sup>44</sup> Finally, a Spanish group showed a poor reproducibility of the WHO criteria for cases with 5-9% marrow blasts or up to 1% circulating blasts as well as for the percentage of dysplastic erythroid cells.<sup>45</sup>

It should be emphasized the possible role of the barriers that can hinder a correct diagnostic definition: poor quality of marrow specimen, lack of clinical information, lack of available cytogenetic results, inter-observer variability in the assessment of dysplasia.<sup>46</sup> The application of well codified reproducible criteria could allow a more objective morphological evaluation, and thus a correct implementation of the WHO classification.

**Morphological Score.** In a retrospective study of 318 patients with MDS, a group of patients with other types of non-clonal cytopenias used as pathological controls, and a group of normal subjects, bone marrow hematopoietic cells were carefully examined and classified according to their nuclear and cytoplasmic morphological alterations to identify minimal reproducible morphological criteria to define marrow dysplasia and to evaluate the prognostic relevance of the degree of dysplasia.<sup>47</sup> The most discriminant morphological features for dyserythropoiesis, dysgranulopoiesis and dysmegakaryopoiesis were identified. For each parameter, the optimal cut-off value to discriminate between MDS and controls and the weight in the recognition of BM dysplasia were determined to develop a score for defining minimal morphological criteria for MDS (**Table 5**). This score showed high sensitivity and specificity (>90%). The diagnostic value and reproducibility of the proposed criteria were independently validated (**Table 6**). There was a high inter-operator agreement, especially for patients with excess blasts. Very interestingly, erythroid score value did not significantly affect survival while granulocytic or megakaryocytic score levels had a significant effect on overall survival. Also, multilineage dysplasia showed an independent unfavorable prognostic value. Moreover, a close association was found between ring sideroblasts and *SF3B1* mutations and between severe granulocytic dysplasia and mutations of *ASXL1*, *RUNX1*, *TP53* and *SRSF2* genes.

In conclusion, this morphological score improving the objectivity and reproducibility of microscopic analysis might be very useful in the work-up of patients with suspected MDS. On the other hand, prognostic systems including the evaluation of the degree of bone marrow dysplasia should be adopted for clinical decision-making.

**Histopathology.** A bone marrow trephine biopsy may increase the diagnostic accuracy and help in refining the prognostic scoring system for MDS. It provides information on cellularity and stroma and is essential for the identification of MDS with fibrosis and hypoplastic MDS.<sup>48-52</sup> In these peculiar entities (10-15% of patients) that have a particular prognostic significance,<sup>52,53</sup> diagnosis may be very difficult using bone marrow aspirates. In this regard, a scoring system

**Table 5.** Morphological score.<sup>47</sup>

Morphological abnormalities	Cut off values	Cohen's K coefficient (inter-operator variability)	Variable weighted score
<i>Dyserythropoiesis*</i>			
Megaloblastosis	>5	.83	2
Bi- or multinuclearity	>3	.87	1
	>5		2
Nuclear lobulation or irregular contours	>3	.84	1
Pyknosis	>5	.81	1
Cytoplasmic fraying	≥7	.82	1
Ring sideroblasts	>5	.95	2
	≥15		3
Ferritin sideroblasts	≥30	.92	1
<i>Dysgranulopoiesis*</i>			
Myeloblasts	≥3%	.92	1
	≥5%		3
Auer rod	≥1%	.90	3
Pseudo Pelger-Hüet anomaly	>3%	.87	1
	>5%		2
Abnormal nuclear shape	≥7%	.86	1
Neutrophil hypogranulation	>3%	.81	1
	>5%		2
<i>Dysmegakaryopoiesis*</i>			
Micromegakaryocytes	>5%	.88	3
Small binucleated megakaryocytes	>5%	.81	1
Megakaryocytes with multiple separated nuclei	>5%	.84	2
Hypolobated/monolobar megakaryocytes	>5%	.86	2

\*Erythroid, myeloid and megakaryocytic dysplasia was defined in the presence of a score value ≥3.

**Table 6.** Diagnostic value and inter-observer reproducibility of the morphological score in an independent cohort of patients (MDS and non-clonal cytopenias).<sup>47</sup>

	Sensitivity %		Specificity %		Concordance between panel 1 and 2 (K test)
	Morphologist panel 1	Morphologist panel 2	Morphologist panel 1	Morphologist panel 2	
<i>Dyserythropoiesis</i>	92	87	91	89	.83
<i>Dysgranulopoiesis</i>	89	90	98	87	.82
<i>Dysmegakaryocytopenias</i>	89	86	99	94	.86

for the differential diagnosis between MDS and other myeloid neoplasms with fibrosis, and between MDS and other cytopenias with reduced bone marrow cellularity was developed.<sup>47</sup>

Bone marrow biopsy also allows a better evaluation of megakaryocytes and may show the presence of aggregates or clusters of blasts, a typical finding in aggressive subtypes.<sup>35,54</sup> Moreover, it can provide material for additional diagnostic procedures, such as immunohistochemistry, in situ hybridization or molecular analysis.

**Recommendations for Diagnosis.** The combination of manifest bone marrow dysplasia and clonal cytogenetic abnormality allows a conclusive diagnosis, but this is possible for only a part of patients. Diagnosis may be particularly difficult in patients with <5% bone marrow blasts and only one cytopenia. If a patient with a clinical and laboratory suspect of MDS has

inconclusive morphological features, a presumptive diagnosis of MDS can be made in the presence of a specific chromosomal abnormality demonstrating clonality. If there is only unilineage dysplasia, in the absence of recurrent cytogenetic abnormalities, without increase of peripheral or bone marrow blasts, with less than 15% ring sideroblasts, an observation period of 6 months and repeating bone marrow examination is recommended prior to making the diagnosis of MDS. For patients with persistent cytopenia(s) (at least 6 months), in the absence of morphological or cytogenetic evidence sufficient for a definitive diagnosis of MDS, the term "idiopathic cytopenia of undetermined significance" (ICUS) should be used (**Figure 3**).

**Newly Defined Entities.** The term ICUS was first proposed by the IWGM-MDS at a meeting in Lisbon in 2005, and subsequently used in the 2008 WHO



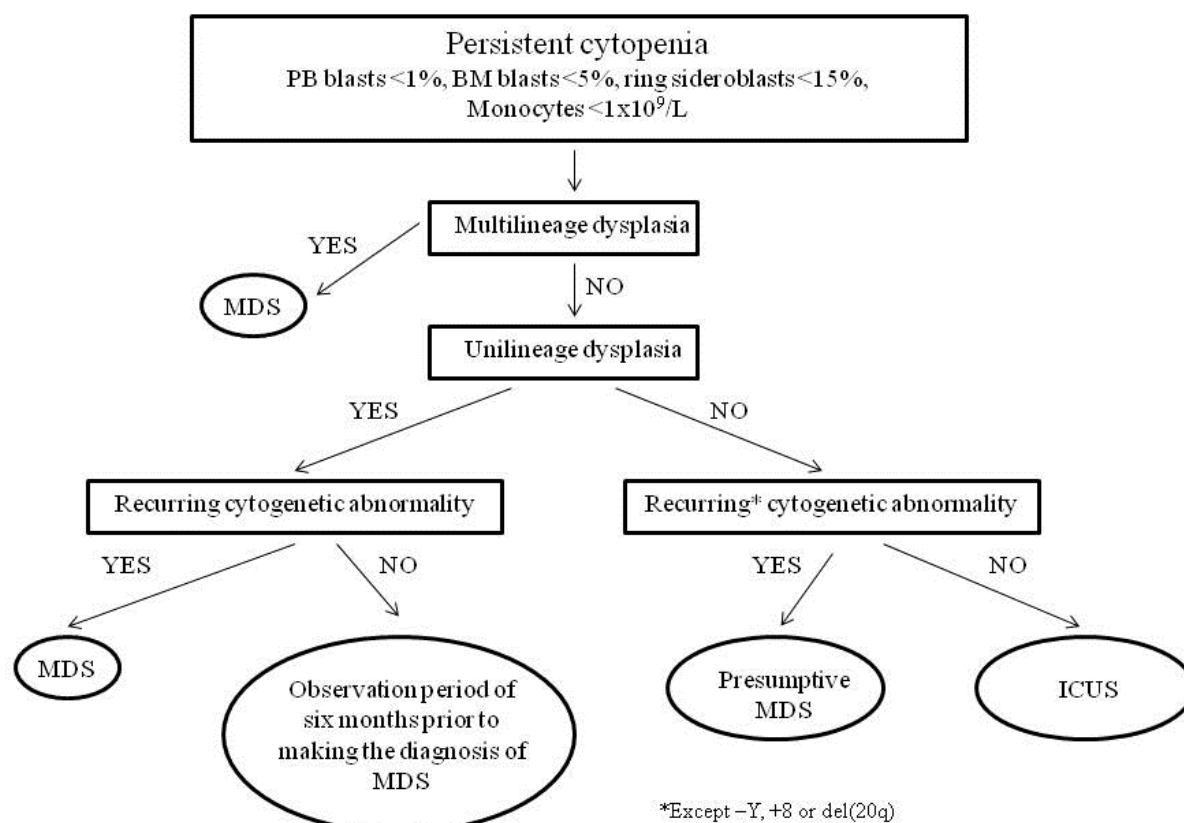


Figure 3. Diagnostic algorithm.

classification and by others. ICUS and idiopathic dysplasia of undetermined significance (IDUS) are conditions in which the criteria for the diagnosis of MDS are not satisfied, even if cytopenia or dysplasia is present.<sup>6,55-58</sup> ICUS is characterized by persistent primary cytopenia, in the absence of morphological or cytogenetic abnormalities specific of MDS, whereas in IDUS there are morphological and/or karyotypic dysplastic alterations, casually observed, in the absence of cytopenia. In ICUS, cytopenia may concern one or more hematopoietic lineages; therefore, the terms of idiopathic anemia, neutropenia, thrombocytopenia, or bi/pancytopenia of uncertain significance have been proposed. The groups of cases so far described are numerically small, except the one obtained from the MDS registry of Düsseldorf.<sup>59</sup> In both ICUS and IDUS, a neoplastic clone can be found already at diagnosis, and progression to an overt MDS or another myeloid malignancy is possible after a variable period. Thus, these conditions should be considered as a potential pre-phase of myeloid neoplasms, and have to be closely monitored for the unpredictable course.

## References:

1. Cazzola M, Della Porta MG, Travaglino E, Malcovati L. Classification and prognostic evaluation of myelodysplastic syndromes. *Sem Oncol* 2011; 38:627-634. <http://dx.doi.org/10.1053/j.seminoncol.2011.04.007>

**Conclusions.** Despite the WHO diagnostic and classification criteria, the morphological diagnosis of MDS is still often critical and requires considerable expertise.<sup>60</sup> On the other hand, as more specific treatments are becoming available, an accurate diagnosis is increasingly important. Recently, the use of new molecular techniques, including gene expression profiling and analysis of point mutations, has allowed to detect, even in patients with normal karyotype, clonal abnormalities of considerable diagnostic and prognostic meaning.<sup>61-64</sup> However, although in the future morphology and cytogenetics should be integrated with the new molecular techniques to classify MDS,<sup>65</sup> for the moment the morphological approach continues to be fundamental at least at the beginning of the diagnostic algorithm.

**Acknowledgments.** This work was supported by a grant from Fondazione IRCCS Policlinico San Matteo, Pavia, Italy.

2. Malcovati L, Hellström-Lindberg E, Bowen D, et al. diagnosis and treatment of primary myelodysplastic syndromes in adults. Recommendations from the European LeukemiaNet. *Blood* 2013; PMID:21943669

- 122:2943-2964.  
<http://dx.doi.org/10.1182/blood-2013-03-492884> PMID:23980065  
 PMCid:PMC3811170
3. Yamazaki H, Nakao S. Border between aplastic anemia and myelodysplastic syndrome. *Int J Hematol* 2013; 97:558-563.  
<http://dx.doi.org/10.1007/s12185-013-1324-x> PMID:23613266
  4. Gondek LP, DeZern AE. I walk the line: how to tell MDS from other bone marrow failure conditions. *Curr Hematol Malig Rep* 2014; 9:389-399.  
<http://dx.doi.org/10.1007/s11899-014-0224-3> PMID:25079655
  5. Vardiman JW, Harris NL, Brunning RD. The World Health Organization (WHO) classification of the myeloid neoplasms. *Blood* 2002; 100:2292-2302.  
<http://dx.doi.org/10.1182/blood-2002-04-1199> PMID:12239137
  6. Swerdlow SH, Campo E, Harris NL, et al. WHO classification of tumours of haematopoietic and lymphoid tissues. IARC Press, Lyon, 2008.
  7. Vardiman JW, Thiele J, Arber DA et al. The 2008 revision of the World Health Organization (WHO) classification of myeloid neoplasms and acute leukemia: rationale and important changes. *Blood* 2009; 114:937-951.  
<http://dx.doi.org/10.1182/blood-2009-03-209262> PMID:19357394
  8. Bennett JM, Catovsky D, Daniel MT, et al. Proposals for the classification of the myelodysplastic syndromes. *Br J Haematol* 1982; 51:89-99.  
<http://dx.doi.org/10.1111/j.1365-2141.1982.tb08475.x>
  9. Malcovati L, Porta MG, Pascutto C, et al. Prognostic factors and life expectancy in myelodysplastic syndromes classified according to WHO criteria: a basis for clinical decision making. *J Clin Oncol* 2005; 23:7594-7603.  
<http://dx.doi.org/10.1200/JCO.2005.01.7038> PMID:16186598
  10. Malcovati L, Germing U, Kuendgen A, et al. Time dependent prognostic scoring system for predicting survival and leukemic evolution in the myelodysplastic syndromes. *J Clin Oncol* 2007; 25:3503-3510.  
<http://dx.doi.org/10.1200/JCO.2006.08.5696> PMID:17687155
  11. Valent P, Horny HP, Bennett JM, et al. Definitions and standards in the diagnosis and treatment of the myelodysplastic syndromes: Consensus statements and report from a working conference. *Leuk Res* 2007; 727-736.  
<http://dx.doi.org/10.1016/j.leukres.2006.11.009> PMID:17257673
  12. Platzbecker U, Santini V, Mufti GJ, et al. Update on developments in the diagnosis and prognostic evaluation of patients with myelodysplastic syndromes (MDS): Consensus statements and report from an expert workshop. *Leuk Res* 2012; 36:264-270.  
<http://dx.doi.org/10.1016/j.leukres.2011.11.005> PMID:22137318
  13. Malcovati L, Della Porta MG, Lunghi M, et al. Flow cytometry evaluation of erythroid and myeloid dysplasia in patients with myelodysplastic syndrome. *Leukemia* 2005; 19:776-783.  
<http://dx.doi.org/10.1038/sj.leu.2403680> PMID:15789068
  14. Bacher U, Haferlach T, Kem W, Weiss T, Schnittger S, Haferlach C. The impact of cytomorphology, cytogenetics, molecular genetics, and immunophenotyping in a comprehensive diagnostic workup of myelodysplastic syndromes. *Cancer* 2009; 115:4524-4532.  
<http://dx.doi.org/10.1002/ncr.24501> PMID:19569249
  15. Orazi A, Germing U. The myelodysplastic/myeloproliferative neoplasms: myeloproliferative diseases with dysplastic features. *Leukemia* 2008; 22:1308-1319.  
<http://dx.doi.org/10.1038/leu.2008.119> PMID:18480833
  16. Cazzola M, Malcovati L, Invernizzi R. Myelodysplastic/myeloproliferative neoplasms. *Hematology Am Soc Hematol Educ Program*. 2011; 2011:264-272.  
<http://dx.doi.org/10.1182/asheducation-2011.1.264> PMID:22160044
  17. Goasguen JE, Bennett JM. Classification and morphologic features of the myelodysplastic syndromes. *Semin Oncol* 1992; 19:4-13. PMID:1736369
  18. Komrokji RS, Zhang L, Bennett JM. Myelodysplastic syndromes classification and risk stratification. *Hematol Oncol Clin N Am* 2010; 24:443-457.  
<http://dx.doi.org/10.1016/j.hoc.2010.02.004> PMID:20359636
  19. Wang SA. Diagnosis of myelodysplastic syndromes in cytopenic patients. *Hematol Oncol Clin N Am* 2011; 25:1085-1110.  
<http://dx.doi.org/10.1016/j.hoc.2011.09.009> PMID:22054736
  20. Giagounidis A, Haase D. Morphology, cytogenetics and classification of MDS. *Best Practice Res Clin Haematol* 2013; 26:337-353.  
<http://dx.doi.org/10.1016/j.beha.2013.09.004> PMID:24507811
  21. Mufti GJ, Bennett JM, Goasguen J, et al. Diagnosis and classification of MDS: International Working Group on Morphology of MDS (IWGM-MDS) consensus proposals for the definition and enumeration of myeloblasts and ring sideroblasts. *Haematologica* 2008; 93:110-115.  
<http://dx.doi.org/10.3324/haematol.13405> PMID:18838480
  22. Wang H, Wang XQ, Xu XP, Lin GW. Bone marrow blast level predicts prognosis in patients with refractory cytopenia with multilineage dysplasia. *Eur J Haematol* 2009; 83:550-558.  
<http://dx.doi.org/10.1111/j.1600-0609.2009.01343.x> PMID:19737310
  23. Greenberg PL, Tuechler H, Schanz J, et al. Revised international prognostic scoring system for myelodysplastic syndromes. *Blood* 2012; 120:2454-2465.  
<http://dx.doi.org/10.1182/blood-2012-03-420489> PMID:22740453
  24. Knipp S, Strupp C, Gattermann N, et al. Presence of peripheral blasts in refractory anemia and refractory cytopenia with multilineage dysplasia predicts an unfavourable outcome. *Leuk Res* 2008; 32:33-37.  
<http://dx.doi.org/10.1016/j.leukres.2007.02.021> PMID:17412418
  25. Goasguen JE, Bennett JM, Bain BJ, Vallespi T, Brunning R, Mufti GJ for the International Working Group on Morphology of Myelodysplastic Syndrome (IWGM-MDS). Morphologic evaluation of monocytes and their precursors. *Haematologica* 2009; 94:994-997.  
<http://dx.doi.org/10.3324/haematol.2008.005421> PMID:19535346  
 PMCid:PMC2704310
  26. Matsuda A, Germing U, Jinnai I, et al. Improvement of criteria for refractory cytopenia with multilineage dysplasia according to the WHO classification based on prognostic significance of morphological features in patients with refractory anemia according to the FAB classification. *Leukemia* 2007; 21:678-686.  
<http://dx.doi.org/10.1038/sj.leu.2404571>
  27. Verburch E, Achten R, Louw VJ, et al. A new disease categorization of low-grade myelodysplastic syndromes based on the expression of cytopenia and dysplasia in one versus more than one lineage improves on the WHO classification. *Leukemia* 2007; 21:668-677. <http://dx.doi.org/10.1038/sj.leu.2404564>
  28. Buckstein R, Jang K, Friedlich J, et al. Estimating the prevalence of myelodysplastic syndromes in patients with unexplained cytopenias: a retrospective study of 322 bone marrows. *Leuk Res* 2009; 33:1313-1318.  
<http://dx.doi.org/10.1016/j.leukres.2009.02.010> PMID:19282029
  29. Liu D, Chen Z, Xue Y, et al. The significance of bone marrow cell morphology and its correlation with cytogenetic features in the diagnosis of MDS-RA patients. *Leuk Res* 2009; 33:1029-1038.  
<http://dx.doi.org/10.1016/j.leukres.2009.02.011> PMID:19411106
  30. Hast R, Nilsson I, Widell S, Ost A. Diagnostic significance of dysplastic features of peripheral blood polymorphs in myelodysplastic syndromes. *Leuk Res* 1989; 13:173-178  
[http://dx.doi.org/10.1016/0145-2126\(89\)90142-2](http://dx.doi.org/10.1016/0145-2126(89)90142-2)
  31. Goasguen JE, Bennett JM, Bain BJ, et al. Proposal for refining the definition of dysgranulopoiesis in acute myeloid leukemia and myelodysplastic syndromes. *Leuk Res* 2014; 38:447-453.  
<http://dx.doi.org/10.1016/j.leukres.2013.12.020> PMID:24439566
  32. Cazzola M, Invernizzi R, Bergamaschi G, et al. Mitochondrial ferritin expression in erythroid cells from patients with sideroblastic anemia. *Blood* 2003; 101:1996-2000.  
<http://dx.doi.org/10.1182/blood-2002-07-2006> PMID:12406866
  33. Zhou J, Orazi A, Czader MB. Myelodysplastic syndromes. *Semin Diagn Pathol* 2011; 28:258-272.  
<http://dx.doi.org/10.1053/j.semdp.2011.08.005> PMID:22195404
  34. Wang SA, Tang G, Fadare O, et al. Erythroid-predominant myelodysplastic syndromes: enumeration of blasts from nonerythroid rather than total marrow cells provides superior risk stratification. *Mod Pathol* 2008; 21:1394-1402.  
<http://dx.doi.org/10.1038/modpathol.2008.142>
  35. Valent P, Orazi A, Büsche G, et al. Standards and impact of hemathopathology in myelodysplastic syndromes (MDS). *Oncotarget* 2010; 1:483-496. PMID:21317447  
 PMCid:PMC3248141
  36. Cantù Rajnoldi A, Fenu S, Kerndrup G, van Wering ER, Niemeyer CM, Baumann I for the European Working Group on Myelodysplastic Syndromes in Childhood (EWOG-MDS). Evaluation of dysplastic features in myelodysplastic syndromes: experience from the morphology group of the European Working Group of MDS in Childhood (EWOG-MDS). *Ann Hematol* 2005; 84:429-433.  
<http://dx.doi.org/10.1007/s00277-005-1034-4> PMID:15838669
  37. Matsuda A, Jinnai I, Yagasaki F, et al. Refractory anemia with severe dysplasia: clinical significance of morphological features in refractory anemia. *Leukemia* 1998; 12:482-485.

- <http://dx.doi.org/10.1038/sj.leu.2400966> PMID:9557604
38. Tassin F, Dewé W, Schaaf N, et al. A four-parameter index of marrow dysplasia has predictive value for survival in myelodysplastic syndromes. *Leuk Lymph* 2000; 36:485-496. <http://dx.doi.org/10.3109/10428190009148396> PMID:10784393
  39. Matsuda A, Jinnai I, Miyazaki Y, Tomonaga M. Proposals for a grading system for diagnostic accuracy of myelodysplastic syndromes. *Clin Leuk* 2008; 2:102-106. <http://dx.doi.org/10.3816/CLK.2008.n.012>
  40. Germing U, Strupp C, Giagounidis A, et al. Evaluation of dysplasia through detailed cytomorphology in 3156 patients from the Düsseldorf Registry on myelodysplastic syndromes. *Leuk Res* 2012; 36:727-734. <http://dx.doi.org/10.1016/j.leukres.2012.02.014> PMID:22421409
  41. Ramos F, Fernandez-Ferrero S, Suarez D, et al. Myelodysplastic syndrome: a search for minimal diagnostic criteria. *Leuk Res* 1999; 23:283-290. [http://dx.doi.org/10.1016/S0145-2126\(98\)00166-0](http://dx.doi.org/10.1016/S0145-2126(98)00166-0)
  42. Bain BJ. The bone marrow aspirate of healthy subjects. *Br J Haematol* 1996; 94:206-209. <http://dx.doi.org/10.1046/j.1365-2141.1996.d01-1786.x> PMID:8757536
  43. Parmentier S, Schetelig J, Lorenz K, et al. Assessment of dysplastic hematopoiesis: lessons from healthy bone marrow donors. *Haematologica* 2012; 97:723-730. <http://dx.doi.org/10.3324/haematol.2011.056879> PMID:22180437  
PMCID:PMC3342975
  44. Naqvi K, Jabbour E, Bueso-Ramos C, et al. Implications of discrepancy in morphologic diagnosis of myelodysplastic syndrome between referral and tertiary care centers. *Blood* 2011; 118:4690-4693. <http://dx.doi.org/10.1182/blood-2011-03-342642> PMID:21868570  
PMCID:PMC4081364
  45. Senent L, Arenillas L, Lu-o E, Ruiz JC, Sanz J, Florensa L. Reproducibility of the World Health Organization 2008 criteria for myelodysplastic syndromes. *Haematologica* 2013; 98:568-575. <http://dx.doi.org/10.3324/haematol.2012.071449> PMID:23065505  
PMCID:PMC3659988
  46. Glauser TA, Sagatys EM, Williamson JC, et al. Current pathology practices in and barriers to MDS diagnosis. *Leuk Res* 2013; 37:1656-1661. <http://dx.doi.org/10.1016/j.leukres.2013.10.007> PMID:24220584
  47. Della Porta MG, Travaglino E, Boveri E, et al. Minimal morphological criteria for defining bone marrow dysplasia: a basis for clinical implementation of WHO classification of myelodysplastic syndromes. *Leukemia* 2015; 29:66-75. <http://dx.doi.org/10.1038/leu.2014.161> PMID:24935723
  48. Lambertenghi-Delilieri G, Annaloro C, Oriani A, Soligo D. Myelodysplastic syndrome associated with bone marrow fibrosis. *Leuk Lymphoma* 1992; 8:51-55. <http://dx.doi.org/10.3109/10428199209049817> PMID:1493471
  49. Tuzuner N, Cox C, Rowe JM, Watrous D, Bennett JM. Hypocellular myelodysplastic syndromes (MDS): new proposals. *Br J Haematol* 1995; 91:612-617. <http://dx.doi.org/10.1111/j.1365-2141.1995.tb05356.x> PMID:8555063
  50. Thiele J, Kvasnicka HM, Facchetti F, Franco V, van der Walt J, Orazi A. European consensus on grading bone marrow fibrosis and assessment of cellularity. *Haematologica* 2005; 90:1128-1132. PMID:16079113
  51. Bennett JM, Orazi A. Diagnostic criteria to distinguish hypocellular acute myeloid leukemia from hypocellular myelodysplastic syndromes and aplastic anemia: recommendations for a standardized approach. *Haematologica* 2009; 94:264-268. <http://dx.doi.org/10.3324/haematol.13755> PMID:19144661  
PMCID:PMC2635414
  52. Della Porta MG, Malcovati L, Boveri E, et al. Clinical relevance of bone marrow fibrosis and CD34-positive cell clusters in primary myelodysplastic syndromes. *J Clin Oncol* 2009; 27:754-762. <http://dx.doi.org/10.1200/JCO.2008.18.2246> PMID:19103730
  53. Buesche G, Teoman H, Wilczak W, et al. Marrow fibrosis predicts early fatal marrow failure in patients with myelodysplastic syndromes. *Leukemia* 2008; 22:313-322. <http://dx.doi.org/10.1038/sj.leu.2405030> PMID:18033321
  54. Orazi A, Czader MB. Myelodysplastic syndromes. *Am J Clin Pathol* 2009; 132:290-305. <http://dx.doi.org/10.1309/AJCPRCXX4R0YHKWV> PMID:19605823
  55. Wimazal F, Fonatsch C, Thalhammer R, et al. Idiopathic cytopenia of undetermined significance (ICUS) versus low risk MDS: the diagnostic interface. *Leuk Res* 2007; 31:1461-1468. <http://dx.doi.org/10.1016/j.leukres.2007.03.015> PMID:17507091
  56. Valent P, Horny HP. Minimal diagnostic criteria for myelodysplastic syndromes and separation from ICUS and IDUS: update and open questions. *Eur J Clin Invest* 2009; 39:548-553. <http://dx.doi.org/10.1111/j.1365-2362.2009.02151.x> PMID:19453651
  57. Valent P, Jäger E, Mitterbauer-Hohendanner G, et al. Idiopathic bone marrow dysplasia of unknown significance (IDUS): definition, pathogenesis, follow up, and prognosis. *Am J Cancer Res* 2011; 1:531-541. PMID:21984971  
PMCID:PMC3186051
  58. Valent P, Bain BJ, Bennett JM, et al. Idiopathic cytopenia of undetermined significance (ICUS) and idiopathic dysplasia of uncertain significance (IDUS), and their distinction from low risk MDS. *Leuk Res* 2012; 36:1-5. PMID:21920601
  59. Schroeder T, Ruf L, Bernhardt A, et al. Distinguishing myelodysplastic syndromes (MDS) from idiopathic cytopenia of undetermined significance (ICUS): HUMARA unravels clonality in a subgroup of patients. *Ann Oncol* 2010; 21:2267-2271. <http://dx.doi.org/10.1093/annonc/mdq233> PMID:20439346
  60. Bennett JM. Morphological classification of the myelodysplastic syndromes: how much more education of diagnosticians is necessary? *Haematologica* 2013; 93:490-491. <http://dx.doi.org/10.3324/haematol.2013.084418> PMID:23543153  
PMCID:PMC3659978
  61. Bejar R, Levine R, Ebert BL. Unraveling the molecular pathophysiology of myelodysplastic syndromes. *J Clin Oncol* 2011; 29:504-515. <http://dx.doi.org/10.1200/JCO.2010.31.1175> PMID:21220588  
PMCID:PMC3969457
  62. Yoshida K, Sanada M, Shiraishi Y, et al. Frequent pathway mutations of splicing machinery in myelodysplasia. *Nature* 2011; 478:64-69. <http://dx.doi.org/10.1038/nature10496> PMID:21909114
  63. Cazzola M, Della Porta MG, Malcovati L. The genetic basis of myelodysplasia and its clinical relevance. *Blood* 2013; 122:4021-4034. PMID:24970933  
PMCID:PMC4148773
  64. Malcovati L, Papaemmanuil E, Ambaglio I, et al. Driver somatic mutations identify distinct disease entities within myeloid neoplasms with myelodysplasia. *Blood*. 2014; 124:1513-1521. <http://dx.doi.org/10.1182/blood-2014-03-560227> PMID:24970933
  65. Van't Veer M, Haferlach T. Should clinical hematologists put their microscopes on eBay? *Haematologica* 2014; 99:1533-1534. <http://dx.doi.org/10.3324/haematol.2014.114710> PMID:25271310  
PMCID:PMC4181246