

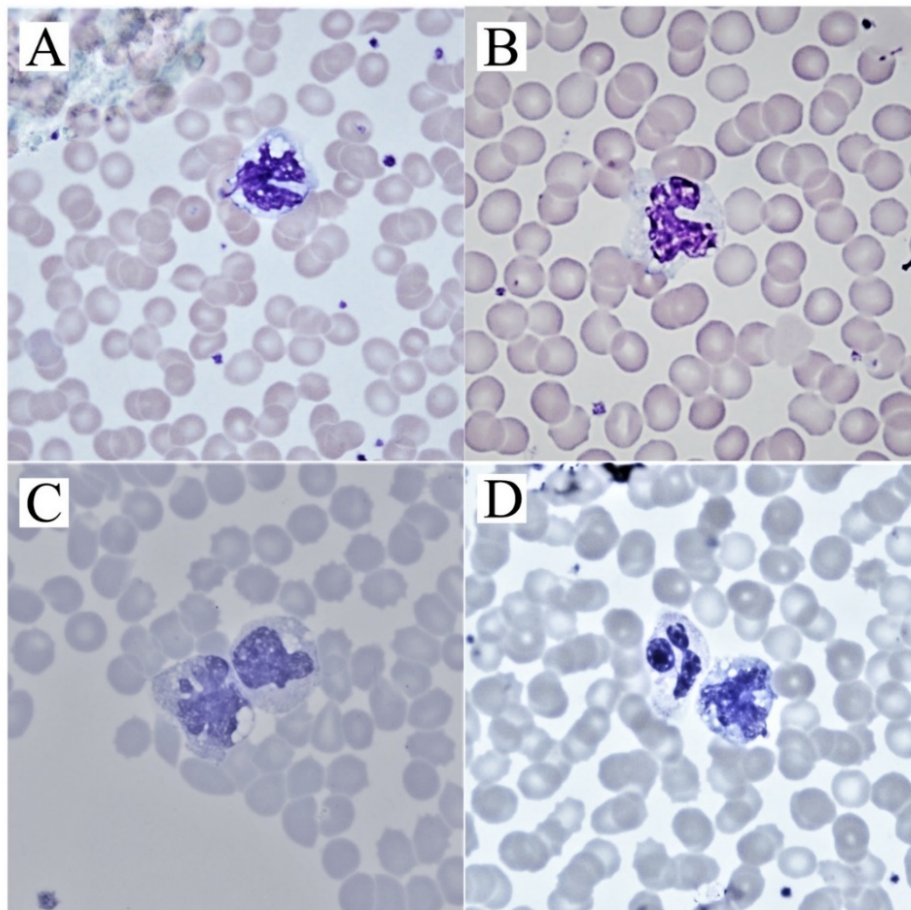


Mediterranean Journal of Hematology and Infectious Diseases

Editor in chief: Giuseppe Leone

Volume 13, Issue 1, Year 2021.

Review Articles, Original Articles, Scientific Letter, Case Reports, Letters to Editor.



Cells with a nucleus having features like loose chromatin network, curved, resembling kidney and located in the middle or edge of the cell, with gray-blue colored cytoplasm, and thin granules were evaluated monocytes. Berber I. et al. MJHD 2021