

Original Article

Lenalidomide in Combination with Dexamethasone in Elderly Patients with Advanced, Relapsed or Refractory Multiple Myeloma and Renal Failure

Patrizia Tosi¹, Barbara Gamberi², Barbara Castagnari³, Anna Lia Molinari¹, Paolo Savini⁴, Michela Ceccolini⁵, Monica Tani³, Anna Merli¹, Manuela Imola¹, Anna Maria Mianulli¹, Claudia Cellini³, Simona Tomassetti¹, Francesco Merli², Pierpaolo Fattori⁵ and Alfonso Zaccaria⁵

¹ Hematology Unit, Infermi Hospital, Rimini Italy

² Hematology Unit, Department of Oncology and Advanced Technologies, S Maria Nuova Hospital IRCSS Reggio Emilia Italy

³ Hematology Unit, S. Maria Delle Croci Hospital, Ravenna Italy

⁴ Internal Medicine Unit, Faenza Hospital Italy

⁵ IRCCS IRST Meldola Italy

Correspondence to: Patrizia Tosi, MD. UO Ematologia, Ospedale degli Infermi, Viale Settembrini, 2, 47900 – Rimini, Italy. Tel. + 39 0541 705987 Fax. + 39 0541 705567. E-mail: patrizia.tosi@auslrm.net

Competing interests: The authors have declared that no competing interests exist.

Published: June 3, 2013

Received: April 4, 2013

Accepted: May 16, 2013

Citation: *Mediterr J Hematol Infect Dis* 2013, 5(1): e2013037, DOI: 10.4084/MJHID.2013.037

This article is available from: <http://www.mjhid.org/article/view/11707>

This is an Open Access article distributed under the terms of the Creative Commons Attribution License (<http://creativecommons.org/licenses/by/2.0>), which permits unrestricted use, distribution, and reproduction in any medium, provided the original work is properly cited.

Abstract. Salvage therapy of elderly patients with advanced, relapsed and refractory multiple myeloma (MM) is often limited by poor marrow reserve and multi-organ impairment. In particular, renal failure occurs in up to 50% of such patients, and this can potentially limit the therapeutic options. Both thalidomide and bortezomib have proven effective in these patients, with an acceptable toxicity, while, in clinical practice, lenalidomide is generally not considered a first-choice drug for MM patients with renal failure as early reports showed an increased hematological toxicity unless appropriate dose reduction is applied. Aim of this study was a retrospective evaluation of the efficacy of the combination Lenalidomide + Dexamethasone in a population of elderly MM patients treated in 5 Italian Centers. The study included 20 consecutive MM patients (9 M, 11 F, median age 76.5 years) with relapsed (N= 6) or refractory (N=13) MM and moderate to severe renal failure, defined as creatinine clearance (Cr Cl) < 50ml/min. Four patients were undergoing hemodialysis at study entry. 85 % of the patients had been previously treated with bortezomib-containing regimens. Lenalidomide dose was adjusted according to renal function and patients clinical conditions Median treatment duration was 16 months (1-22), therapy was interrupted after 1 21-day cycle in 2 patients. Grade III-IV neutropenia was observed in 7 patients (35%); grade III-IV non hematological toxicity was recorded in 3 cases (28%). A > partial response was observed in 8 patients (40%), 1 of whom obtained a VGPR; 4 additional patients achieved a minor response. Median response duration was 16 months (range 2-19+ months). A complete and partial renal response was obtained in 4 and 3 patients, respectively, all of them were responsive to

Lenalidomide-dexamethasone According to our data, LEN+DEX has shown efficacy and acceptable toxicity in this population of elderly patients with advanced MM and renal failure

Introduction. Multiple myeloma (MM) is a clonal B cell malignancy characterized by a progressive clinical course, usually within 3 to 5 years from diagnosis.¹ The introduction of novel agents such as thalidomide, bortezomib or lenalidomide in the framework of high-dose or conventional chemotherapy programs has significantly improved patients' outcome and survival.² Patients who are refractory or those who relapse after new agents-containing regimens, however, do still represent a therapeutic challenge,³ especially in case of advanced age and presence of co-morbidities. Renal failure occurs in approximately 20-30% of MM patients at diagnosis and in more than 50% of patients with advanced disease.⁴ Salvage therapy in these patients is difficult, due to the necessity to avoid potentially nephrotoxic drugs or compounds that are excreted by the kidney and, until a few years ago, the options were limited to VAD or other high-dose dexamethasone containing regimens. Recently, however, both thalidomide⁵ and bortezomib⁶ have proven effective in reverting renal failure in MM patients responding to treatment, with an acceptable toxicity profile. Lenalidomide is frequently considered a second-choice drug for MM patients with renal failure as it is catabolized through the kidney⁷ and its use has been initially associated with an increased hematological toxicity in patients with impaired renal function.⁸⁻¹¹ Recent observations, however, have pointed out that improvement of renal function can be achieved, in case a response is obtained,¹⁰⁻¹³ and that side effects are easily manageable in case a proper dose reduction is performed.¹⁰⁻¹⁵ Aim of the present study was to investigate the efficacy and the toxicity profile of lenalidomide-dexamethasone combination in a series of elderly patients with advanced, relapsed or refractory multiple myeloma and renal failure.

Patients and Methods. Patients. Twenty consecutive patients (9 male, 11 female, median age = 76.5 years, range 68-85 years) with relapsed (n= 7) or refractory (n = 13) multiple myeloma with disease-related moderate to severe chronic renal failure, defined as creatinine clearance (Cr Cl) \leq 50 ml/minute (**Table 1**) received lenalidomide as salvage treatment at 5 Italian Centers. None of the patient had a pre-existent nephropathy such as nephroangiosclerosis, diabetes or AL-amyloidosis. Previous therapy (1-3 lines) included thalidomide in 9 patients (47%), bortezomib in 17 patients (84%) and autologous stem cell transplantation in 2 patients. Thirteen patients were refractory to the last administered therapy, either to bortezomib (10

Table 1. Patients characteristics

Total Number	20
M/F	9/11
Median age (range)	76.5 yrs (68-85)
IgG isotype (%)	6 (30)
K light chain (%)	12 (60)
Stage III Durie and Salmon	11 (55)
Stage III ISS	15 (75)
Creatinine clearance	
50-30 ml/min (%)	9 (45)
< 30 ml/min (%)	11 (55)
Dialysis (%)	4 (20)
Relapsed	7 (35)
Refractory	13 (65)
Bortezomib refractory	11 (50)
Thalidomide refractory	3 (15)

patients) or to thalidomide (2 patients) or to both bortezomib and thalidomide (one patient). Eleven patients had a more severe impairment of renal function (CrCl < 30ml/min) and four of them were undergoing hemodialysis.

Treatment. Lenalidomide was administered on days 1-21 of each 28-days course; dosing was chosen according to the extent of renal impairment, as previously reported.¹⁵ Specifically, two patients with Cr Cl = 50ml/min were treated with full dose (25mg/day), 7 patients with Cr Cl < 30ml /min received 15mg every other day, patients undergoing hemodialysis were treated at 5mg/day, the remaining patients received 10mg/day. Dexamethasone was used at 20mg/day once a week. All the patients received antithrombotic prophylaxis with either low-molecular weight heparin or aspirin, according to pre-treatment risk of venous thromboembolism, evaluated according to Dimopoulos et al.¹⁶ Treatment was continued until disease progression or occurrence of grade \geq 3 non-hematological toxicity.

Clinical and Laboratory Evaluation. Physical examination, quality of life assessment, blood cell counts, serum electrolytes, serum levels of immunoglobulins, serum creatinine, creatinine clearance and Bence-Jones proteinuria were evaluated before treatment and every other week thereafter. Toxicity and adverse events occurring during thalidomide therapy were evaluated according to the WHO grading system.

Assessment of Tumor Response. Response to lenalidomide was assessed after a minimum of 8

weeks; criteria for defining a complete response (CR), a very good partial response (VGPR) a partial response (PR) or a progressive disease (PD) were those reported by the International Myeloma Study Group¹⁷ with the addition of minor response (MR) category, according to Kyle et al.¹⁸

Renal Response. Improvement in renal function, i.e. complete, partial and minor renal response, were evaluated according to recently reported criteria.¹⁹

Results. Response. All the patients but two completed at least 8 weeks of treatment; data were analyzed on an intention – to – treat basis. A \geq partial response was observed in 8 patients (40%), one of whom obtained a complete response and one a very-good partial response. Four additional patients obtained a minor response, for an overall response rate of 60% (Table 2). Maximal response was achieved after a median of 8 weeks. Median response duration was 16 months (range 2-19+ months) (Figure 1A). Seven patients (35%) were refractory to treatment, even though all of them showed a stable disease lasting an average 7.5 months.

Table 2. Disease response and renal response

Myeloma response	Patient number (%)	Renal response
CR/VGPR	2 (10)	1 complete, 1 minor *
PR	6 (30)	3 complete, 1 partial
MR	4 (20)	2 partial
SD	7 (35)	None
NE	1 (5)	None

*Dialysis withdrawal

Renal Response. Recovery of a normal renal function, defined as creatinine clearance \leq 60ml/min was observed in 4 out of 8 responding patients (20% of the whole population). Three patients showed an increase in CrCl from $<$ 30 to $>$ 30ml/min (partial response). One further responding patient who was dependent on chronic hemodialysis showed an improvement of renal function and dialysis was withdrawn (minor response). No improvement of renal function was observed in patients who were refractory to lenalidomide + dexamethasone therapy.

Toxicity. Toxic effects that were recorded in this series of patients were comparable to those observed in patients with a normal renal function. Neutropenia was the most commonly observed side effect (35% of the patients), although only 3 patients experienced grade \geq 3 infections. No patient showed grade \geq 3 thrombocytopenia. Dose reduction was necessary in 3 patients while therapy was interrupted after 1 21-day cycle in 2 patients, due to tremors and dizziness (1

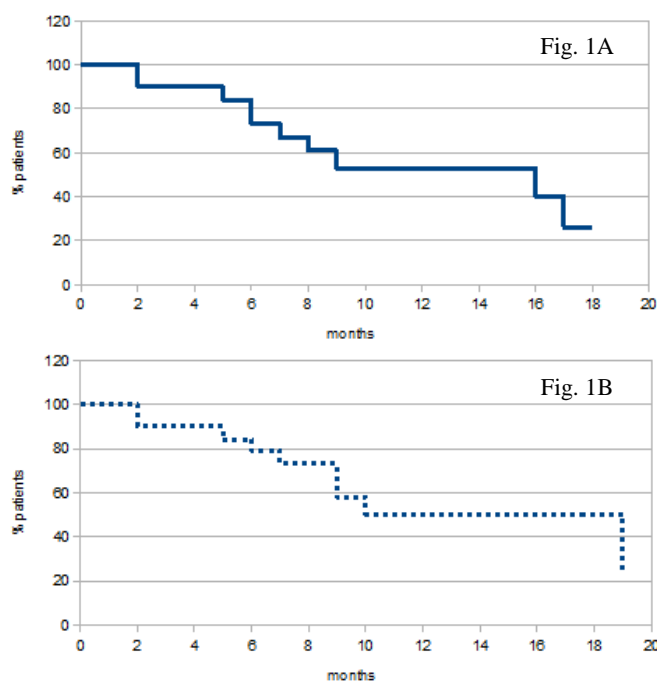


Figure 1. Progression-free (A) and overall survival (B) of treated patients

patient) and stroke (1 patient), this latter patient received low-molecular heparin prophylaxis. Another patient interrupted the treatment after 5 cycles due to recurrent severe infections

Patient Status and Survival. After 8 months median follow up, 2/8 responding patients showed disease progression; 1 of them died. Five additional non responding patients have died. Overall survival averages 9 months (Figure 1B). No second primary tumor was observed.

Discussion. Recently published reports have demonstrated that lenalidomide-based drug combinations are highly effective in in pre-treated advanced MM.²⁰ Major concerns were risen regarding the use of the drug in patients with renal failure. Although a direct damage to the kidney has not been demonstrated in MM, worsening of renal function has been described in patients with AL.amyloidosis.²¹ Lenalidomide is excreted by the kidney, so that its clearance decreases in patients with renal failure, with a consequent 6-12 hours increase in plasma half-life and area-under the curve (AUC).⁷ Retrospective evaluation of relapsed/refractory MM patients with some degree of renal impairment treated with full dose Lenalidomide in the context of clinical trials including mainly patients with normal renal function^{10,11} confirmed the efficacy of the drug but also the occurrence of hematological toxicity, mainly thrombocytopenia that can potentially lead to more frequent treatment discontinuations. Later reports¹²⁻¹⁴ that were mainly focused on patients with renal failure showed that a proper dose reduction can limit

hematological toxicity. We further tested this latter hypothesis by analyzing the data obtained in 20 elderly patients with MM and renal insufficiency. Taking into account that the median age of our patients was higher (76.5 years) than that reported by other studies^{10-11, 14-15} the first, and most significant observation, is that the drug appeared to be safe, as side effects and toxicity, both hematological and non hematological, were not different or more severe than those observed in patients with a normal renal function. Even though karyotype evaluation was not carried out in our patients, their prognosis can be classified as poor (high International staging system score, high percentage of thalidomide and/or bortezomib resistance); in spite of that, 40% of the patients obtained at least a partial response, and this figure is similar to that reported in relapsed-refractory patients with a normal renal function, treated with lenalidomide-dexamethasone combination.²⁰ Overall, a renal response was achieved in eight patients, all of whom showing some degree of disease response. We can thus assume that renal response is strictly dependent on the attainment of a disease response that is a reduced production of light chains, and not on a direct effect on the inflammatory mechanisms that contribute to the pathogenesis of myeloma kidney as it

has been described for bortezomib.²² A bortezomib-containing regimen is generally considered the first choice therapeutic approach for patients with renal failure and MM, either newly diagnosed or relapsed/refractory. All the same however, our study and others¹⁰⁻¹⁴ showed that lenalidomide-based drug combination can induce a response even in bortezomib refractory patients, thus indicating that a lenalidomide-based approach should not be overlooked, especially in elderly patients. Oral administration and, above all, the absence of toxic effects that are encountered upon thalidomide or bortezomib therapy, such as lethargy, constipation and peripheral neuropathy, render the drug convenient for long-term use, especially in elderly patients.²³ Our results, although obtained in a small series of patients, confirm that lenalidomide + dexamethasone can represent a useful therapeutic tool for elderly patients even in case of renal failure, provided an appropriate dose reduction and close monitoring of side effects.

Acknowledgements. Work supported in part by RiminiAil. The authors gratefully thank Alfredo Grattini for data collection and technical assistance

References:

- Kyle RA, Rajkumar SV: Multiple myeloma. *N Engl J Med* 2004; 351:1806-1873. <http://dx.doi.org/10.1056/NEJMra041875> PMID:15509819
- Kumar SK, Rajkumar SV, Dispenzieri A, Lacy MQ, Hayman SR, Buadi FK, Zeldenrust SR, Dingli D, Russell SJ, Lust JA, Greipp PR, Kyle RA, Gertz MA Improved survival in multiple myeloma and the impact of novel therapies. *Blood* 2008; 111:2516-2520. <http://dx.doi.org/10.1182/blood-2007-10-116129> PMID:17975015 PMID:2254544
- Kumar SK, Lee JH, Lahuerta JJ, Morgan G, Richardson PG, Crowley J, Haessler J, Feather J, Hoering A, Moreau P, LeLeu X, Hulin C, Klein SK, Sonneveld P, Siegel D, Blade J, Goldschmidt H, Jagannath S, San Miguel J, Orłowski R, Palumbo A, Sezer O, Rajkumar SV, Durie BG Risk of progression and survival in multiple myeloma relapsing after therapy with ImiDs and bortezomib: a multicenter international myeloma working group study. *Leukemia* 2012;26:149-157. <http://dx.doi.org/10.1038/leu.2011.196> PMID:21799510
- Dimopoulos MA, Terpos E, Chanan-Khan A, Leung N, Ludwig H, Jagannath S, Niesvizky R, Giral S, Femand JP, Blade J, Comenzo RL, Sezer O, Palumbo A, Harousseau JL, Richardson PG, Barlogie B, Anderson KC, Tosi P, Cavo M, Rajkumar SV, Durie BG, San Miguel J Renal impairment in patients with multiple myeloma: a consensus statement on behalf of the International myeloma working group. *J Clin Oncol* 2010; 28:4976-4984. <http://dx.doi.org/10.1200/JCO.2010.30.8791> PMID:20956629
- Tosi P, Zamagni E, Tacchetti P, Ceccolini M, Perrone G, Brioli A, Pallotti MC, Pantani L, Petrucci A, Baccarani M, Cavo M Thalidomide-Dexamethasone as Induction Therapy before Autologous Stem Cell Transplantation in Patients with Newly Diagnosed Multiple Myeloma and Renal Insufficiency *Biol Blood Marrow Transplant* 2010;16:1115-1121.
- Chanan-Khan AA, Kaufman JL, Metha J, Richardson PG, Miller KC, Lonial S, Munshi NC, Schlossman R, Tariman J, Singhal S. Activity and safety of bortezomib in multiple myeloma patients with advanced renal failure: a multicenter retrospective study. *Blood* 2007;109:2604-2606. <http://dx.doi.org/10.1182/blood-2006-09-046409> PMID:17138816
- Chen N, Lau H, Kong L, Kumar G, Zeldis JB, Knight R, Laskin OL Pharmacokinetics of lenalidomide in subjects with various degrees of renal impairment and in subjects on hemodialysis. *J Clin Pharmacol* 2007; 47:1466-1475. <http://dx.doi.org/10.1177/0091270007309563> PMID:17954615
- Niesvizky R, Naib T, Christos PJ, Jayabalan D, Furst JR, Jalbrzikowski J, Zafar F, Mark T, Lent R, Pearse RN, Ely S, Leonard JP, Mazumdar M, Chen-Kiang S, Coleman M Lenalidomide-induced myelosuppression is associated with renal dysfunction: adverse events evaluation of treatment-naïve patients undergoing front-line lenalidomide and dexamethasone therapy. *Br J Haematol* 2007;138:640-643. <http://dx.doi.org/10.1111/j.1365-2141.2007.06698.x> PMID:17686058
- Chen C, Reece DE, Siegel D, Niesvizky R, Boccia RV, Stadtmauer EA, Abonour R, Richardson PG, Matous J, Kumar S, Bahlis NJ, Alsima M, Vescio R, Coutre SE, Pietronigro D, Knight RD, Zeldis JB, Rajkumar V Expanded safety experience with lenalidomide plus dexamethasone in relapsed or refractory multiple myeloma. *Br J Haematol* 2009; 146:164-170. <http://dx.doi.org/10.1111/j.1365-2141.2009.07728.x> PMID:19545290 PMID:2728892
- Dimopoulos M, Alegre A, Stadtmauer EA, Goldschmidt H, Zonder JA, de Castro CM, Masliak Z, Reece D, Olesnyckyj M, Yu Z, Weber DM. The efficacy and safety of lenalidomide plus dexamethasone in relapsed and/or refractory multiple myeloma patients with impaired renal function. *Cancer*. 2010;116:3807-3814. <http://dx.doi.org/10.1002/cncr.25139> PMID:20564094 PMID:2970911
- Klein U, Neben K, Hielscher T, Heiss C, Ho AD, Goldschmidt H Lenalidomide in combination with dexamethasone: effective regimen in patients with relapsed or refractory multiple myeloma complicated by renal impairment. *Ann Hematol* 2011; 90:429-43. <http://dx.doi.org/10.1007/s00277-010-1080-4> PMID:20857112
- Ludwig H, Zoje N: Renal recovery with lenalidomide in a patient with bortezomib-resistant myeloma. *Nat Rev Oncol* 2010;7:289-294. <http://dx.doi.org/10.1038/nrclinonc.2010.31> PMID:20351701
- de la Rubia J, Roig M, Ibanez A, Garcia I, Vera JA, Aguilar C, Del Campo R, Gonzales N, Martinez R, Palomera L, Picon I,

- Rodriguez JN, Sanz M Activity and safety of lenalidomide and dexamethasone in patients with multiple myeloma requiring dialysis: a Spanish multicenter retrospective study. *Eur J Haematol* 2010; 85:363-365. <http://dx.doi.org/10.1111/j.1600-0609.2010.01500.x> PMID:20662900
14. Oehrlin K, Langer C, Sturm I, Ponisch W, Hahn-Ast C, Kuhn S, Weisel KC Successful treatment of patients with multiple myeloma and impaired renal function with lenalidomide: results of 4 german centers. *Clin Lymphoma, myeloma and leukemia* 2012; 12:191-196.
 15. Dimopoulos MA, Terpos E, Goldschmidt H, Alegre A, Mark T, Niesvizky . Treatment with lenalidomide and dexamethasone in patients with multiple myeloma and renal impairment. *Cancer Treat Rev* 2012;38:1012-1019. <http://dx.doi.org/10.1016/j.ctrv.2012.02.009> PMID:22609463
 16. Dimopoulos MA, Palumbo A, Attal M, Beksac M, Davies FE, Delforge M, Einsele H, Hajek R, Harousseau JL, Leal Da Costa F, Ludwig H, Mellqvist UH, Morgan GJ, San Miguel JF, Zweegman S, Sonneveld P Optimizing the use of lenalidomide in relapsed or refractory multiple myeloma: consensus statement. *Leukemia* 2011;25749-760.
 17. Durie BG, Harousseau JL, Miguel JS, Bladé J, Barlogie B, Anderson K, Gertz M, Dimopoulos M, Westin J, Sonneveld P, Ludwig H, Gahrton G, Beksac M, Crowley J, Belch A, Boccadoro M, Cavo M, Turesson I, Joshua D, Vesole D, Kyle R, Alexanian R, Tricot G, Attal M, Merlini G, Powles R, Richardson P, Shimizu K, Tosi P, Morgan G, Rajkumar SV International uniform response criteria for multiple myeloma *Leukemia*. 2006;20:1467-1473. <http://dx.doi.org/10.1038/sj.leu.2404284> PMID:16855634
 18. Kyle RA, Rajkumar SV Criteria for diagnosis, staging, risk stratification and response assessment of multiple myeloma. *Leukemia* 2009; 23:3-9. <http://dx.doi.org/10.1038/leu.2008.291> PMID:18971951 PMCid:2627786
 19. Dimopoulos MA, Roussou M, Gkatzamanidou Nikitas N, Psimenou E, Mparmaparoussi D, Matsouka C, Spyropoulou-Vlachou M, Terpos E, Kastritis E. The role of novel agents on the reversibility of renal impairment in newly diagnosed symptomatic patients with multiple myeloma *Leukemia* 2013;27:423-429. <http://dx.doi.org/10.1038/leu.2012.182> PMID:22763386
 20. Dimopoulos M, Spencer A, Attal M, Prince HM, Harousseau JL, Dmoszynska A, San Miguel J, Hellman A, Facon T, Foa R, Corso A, Masliak Z, Olesnycky M, Patin J, Zeldis JB, Knight RD, et al. Lenalidomide plus dexamethasone for relapsed or refractory multiple myeloma. *N Engl J Med* 2007; 357:2123-2132. <http://dx.doi.org/10.1056/NEJMoa070594> PMID:18032762
 21. Specter R, Sanchorawala V, Seldin DC Shelton A, Fennessey S, Finn KT, Zeldis JB, Dember LM Kidney dysfunction during lenalidomide treatment for AL amyloidosis. *Nephrol Dial Transplant* 2011; 26:881-886. <http://dx.doi.org/10.1093/ndt/gfq482> PMID:20693160 PMCid:3108346
 22. Sarkozi R, Perco P, Hohegger K Enrich J, Wiesinger M, Pirklbauer M, Eder S, Rudnicki M, Rosenkranz AR, Mayer B, Schramek H Bortezomib-induced survival signals and genes in human proximal tubular cells. *J Pharmacol Exp Ther* 2008; 327:645-656. <http://dx.doi.org/10.1124/jpet.108.142604> PMID:18776064
 23. Palumbo A, Bringhen S, Ludwig H Dimopoulos MA, Bladé J, Mateos MV, Rosi-ol L, Boccadoro M, Cavo M, Lokhorst H, Zweegman S, Terpos E, Davies F, Driessen C, Gimsing P, Gramatzki M, Hájek R, Johnsen HE, Leal Da Costa F, Sezer O, Spencer A, Beksac M, Morgan G, Einsele H, San Miguel JF, Sonneveld P. Personalized therapy in multiple myeloma according to patient age and vulnerability: a report of the European Myeloma Network (EMN). *Blood* 2011; 118:4519-4529. <http://dx.doi.org/10.1182/blood-2011-06-358812> PMID:21841166