

Original Article

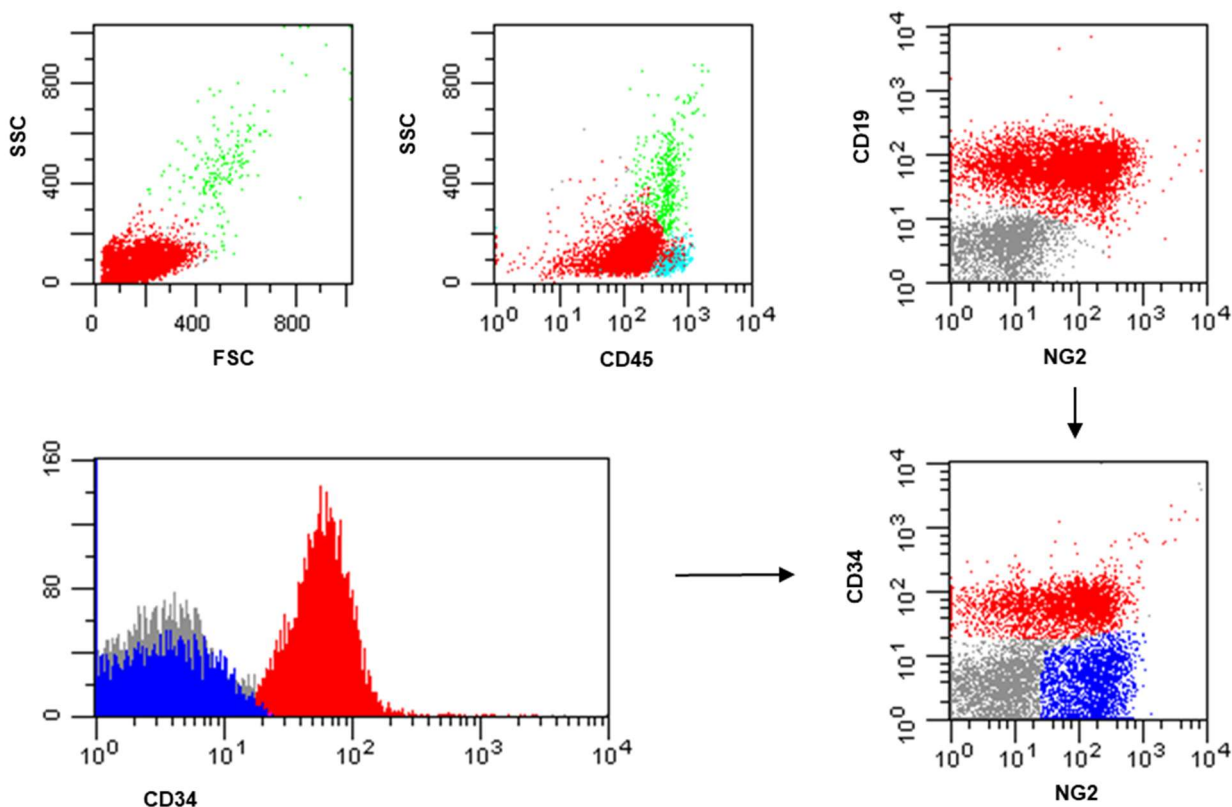
## NG2 Molecule Expression in Acute Lymphoblastic Leukemia B Cells: A Flow-Cytometric Marker for the Rapid Identification of *KMT2A* Gene Rearrangements

Maria Laura Bisegna\*, Nadia Peragine\*, Loredana Elia, Mabel Matarazzo, Maria Laura Milani, Stefania Intoppa, Mariangela Di Trani, Francesco Malfona, Maurizio Martelli and Maria Stefania De Propris.

Hematology, Department of Translational and Precision Medicine, Sapienza University, 00161 Rome, Italy.

\* Both authors contributed equally to this work.

### Online Supplement



**Supplementary Figure 1.** Representative plots of the flow gating strategies to detect NG2+ B-ALL cells. Leukemic B cells were gated within the total CD45<sup>+</sup> leukocyte population, then, due to the partial expression of CD34 antigen (as shown by the relative histogram), NG2<sup>+</sup>/CD19<sup>+</sup> leukemic cells were identified in both CD34<sup>+</sup> and CD34<sup>-</sup> subpopulations. CD34<sup>+</sup>/NG2<sup>+</sup>/CD19<sup>+</sup> cells are depicted in red, CD34<sup>-</sup>/NG2<sup>+</sup>/CD19<sup>+</sup> are depicted in blue while residual granuloblast in green.