

**Letters to the Editor****Co-Occurrence of Jak2-Positive Myelofibrosis and Bcr-Abl-Positive Chronic Myelogenous Leukaemia Treated with Combination of Tyrosine Kinase Inhibitors and Ruxolitinib****Keywords:** Myeloproliferative neoplasms; Tyrosine kinase inhibitor; Chronic Myeloid Leukemia; Jak2 inhibitors.**Published:** March 01, 2025**Received:** February 06, 2025**Accepted:** February 13, 2025**Citation:** Paciaroni K., Campagna S., Villiva N., Maffini E., Celesti F., Tordi A., Lombardi M., Dragonetti G., Caravita di Toritto T.. Co-occurrence of jak2-positive myelofibrosis and and bcr-abl-positive chronic myelogenous leukaemia treated with combination of tyrosine kinase inhibitors and ruxolitinib. *Mediterr J Hematol Infect Dis* 2025, 17(1): e2025023, DOI: <http://dx.doi.org/10.4084/MJHID.2025.023>

This is an Open Access article distributed under the terms of the Creative Commons Attribution License (<https://creativecommons.org/licenses/by-nc/4.0>), which permits unrestricted use, distribution, and reproduction in any medium, provided the original work is properly cited.

**To the editor.**

Myeloproliferative neoplasms (MPNs) are clonal hematopoietic stem cell disorders caused by somatic mutations in the genes involved in the tyrosine kinase alterations, which activate signaling pathways leading to the expansion of myeloid cells. According to the different clinical and morphological features and the genetic aberrations reported in the WHO classification,<sup>1</sup> the MPNs are classified into Philadelphia (Ph) chromosome-positive chronic myeloid leukemia (CML) and Ph-negative MPNs (polycythemia vera, essential thrombocythemia, primary myelofibrosis (PMF)). The affected genes include the BCR-ABL1 in CML and JAK2/CALR/MPL mutations in Ph-negative MPNs. Although these molecular aberrations are usually considered mutually exclusive, the co-expression of BCR-ABL1 translocation and JAK2/CALR mutation has been reported in several case reports (recently reviewed by Zanelli et al.),<sup>2</sup> and its contribution to the clinicopathologic phenotype is still unclear. Based on the time, the two genetic alterations may be identified simultaneously, or BCR-ABL1 translocation may be acquired after a long history of Ph-negative MPNs (median latency 9 years), or finally, Jak 2/Calr MPN may be subsequently detected in previously diagnosed CML (median latency 5.4 years).<sup>3</sup> Indeed, when Ph+ CML is present in conjunction with Ph-negative MPN, it plays a dominant role, so patients usually receive treatment with only tyrosine kinase inhibitor (TKI).<sup>2</sup> The second Ph-negative MPN is initially cryptic and becomes evident under the selective pressure of the TKI treatment, with progression to myelofibrosis reflecting an impact of clonal competition between the 2 MPNs and providing a rationale for combination treatment.<sup>2-5</sup> The availability of kinase inhibitors to target the two driver kinases, TKI for LMC and Ruxolitinib for patients with PMF, opens the question of whether the two-drug association

represents an optimal therapeutic strategy in terms of feasibility, safety and tolerance. Starting from the presentation of a case that we have diagnosed and treated, we conducted a systematic review of the topic.

A 55-year-old man was referred to our center in 2019 because of splenomegaly, leucocytosis (white count cells 14.580/mm<sup>3</sup>), mild thrombocytosis (Platelets 451000/mm<sup>3</sup>), and increase of Lactate dehydrogenase. Cytogenetic analyses revealed the Caryotype 46, XY, t(9;22)(q34;q11.2)[4]/46, XY, and the molecular study documented concurrent BCR-ABL rearrangement (b3a2 and b2a2) and Jak-V617F mutation. The bone marrow (BM) was hypercellular with myeloid and megakaryocytic proliferation and a mild increase in reticulin fibrosis (grade 1). The clinicopathologic features of the patient are reported in **Table 1**. According to WHO, the double diagnosis of CML and Early Myelofibrosis was made. Consequently, Dasatinib therapy was started at 100 mg daily, associated with aspirin once daily. Deep molecular response (DMR) (MR 5.0) was achieved at 6 months and was associated with the normal size of the spleen and cell count. In March 2023, despite DMR during Dasatinib treatment, splenomegaly and persistent moderate anemia were documented. A new BM documented a significant increase in fibrosis (grade 3) with evolution to PMF in the advanced phase (**Figure 1**). The cytogenetic analysis showed del(20), and next-generation sequencing (NGS) detected several mutations (**Table 1**). The patient was classified as DIPSS grade 1, MIPSS70-plus version 2.0 high-risk MF and, consequently, a candidate for allogeneic stem cell transplant (SCT). In the meantime, in June 2023, Ruxolitinib was started at the dose of 15 mg twice. Dasatinib was maintained at a lowered dosage (50 mg/die) to manage the association and toxicity of the two drugs. During the 6 months of combination therapy, no hematological toxicity was noticed, and the DRM

**Table 1.** Summary of clinicopathologic features of the patient with the co-expression of BCR-ABL1 translocation and JAK2 mutation.

	CASE
<b>AGE, YEARS</b>	55
<b>SEX</b>	Male
<b>FIRST PRESENTATION</b>	Incidental findings of Leucocytosis, thrombocytosis and splenomegaly
<b>WHITE BLOOD CELLS</b>	14.580 x10 <sup>3</sup> /uL
<b>HEMOGLOBIN</b>	14.4 gr/dL
<b>PLATLETS</b>	496 000 x10 <sup>3</sup> /uL
<b>LDH</b>	590 mg/dL
<b>SPLENOMEGALY</b>	16 cm in length by ultrasound assessment
<b>BONE MARROW</b>	Hypercellular, myeloid hyperplasia, Megakaryocytic proliferation with atypia, reticulin fibrosis grades 1
<b>KARYOTIPE</b>	46,XY,t(9;22)(q34;q11.2)[4]/46, XY
<b>qRT-PCR for BCR-ABL</b>	BCR-ABL rearrangement (b3a2 and b2a2)
<b>MOLECULAR TEST</b>	JAK 2 V617F
<b>DIAGNOSIS</b>	CML and Early Myelofibrosis
<b>TREATMENT</b>	Dasatinib 100 mg daily associated with aspirin once daily
<b>DISEASE COURSE</b>	Deep molecular response (MR 5.0) was rapidly achieved at 6 months and maintained and associated with the normal size of the spleen and normal cell blood count
<b>SECOND PRESENTATION</b>	Anaemia, Leucocytosis, thrombocytosis, elevated LDH
<b>TIME of SECOND PRESENTATION</b>	41 months after the first diagnosis
<b>WHITE BLOOD CELLS</b>	15.190 x10 <sup>3</sup> /uL
<b>HEMOGLOBIN</b>	10.6 gr/dL
<b>PLATLETS</b>	449 000x10 <sup>3</sup> /uL
<b>LDH</b>	1127 mg/dL
<b>SPLENOMEGALY</b>	16 cm in length by ultrasound assessment
<b>BONE MARROW</b>	a significant increase in fibrosis (grade 3) with evolution to primary Myelofibrosis in the advanced phase
<b>KARYOTIPE</b>	46,XY, del(20)
<b>MOLECULAR TEST</b>	JAK 2 V617F
<b>qRT-PCR for BCR-ABL</b>	Deep molecular response (MR 5.0)
<b>NGS</b>	ETV6c.602T>C ETV6c.886G>A IDH1, ZRSR2
<b>MIPSS70-PLUS VERSION 2.0 SCORE RISK for MF</b>	High risk
<b>TREATMENT and DISEASE COURSE</b>	Ruxolitinib 15 mg x 2 daily associated with lowered dosage of Dasatinib (50 mg/die) for 6 months followed by allogenic SCT
<b>FOLLOW-UP, months</b>	66 months (12 after SCT)
<b>OUTCOME</b>	Alive with complete engraftment and no detectable BCR-ABL1 transcript or JAK2 mutation

CML: chronic myeloid leukemia; LDH: Lactate dehydrogenase; NGS: Next Generation Sequencing, SCT: stem cell transplant.

was maintained. In January 2024, the patient received SCT from an HLA-matched unrelated donor, obtaining a complete donor cell engraftment and complete remission.

Up to August 2024, a systematic PubMed search for publications in English allowed us to identify 87 cases with double aberrations and clinically relevant MPNs. So far, only 13 cases (present one included) of coexistence of Ph+CML and Ph-negative MPN disease were treated with an association of TKIs and Ruxolitinib (**Table 2**). Out of them, nine initially presented with Ph-

negative MPN preceding CML (range 2.5-19 years following the first diagnosis, median 7 years). The CML preceded Ph-negative MPNs in 3 of the 13 cases (range 6 -29 months, median 12 months) during TKI treatment. Only in one case the CML and Ph-negative MPN were concomitant. At the time of the second presentation, the NGS detected several additional genetic aberrations in 4 of the 5 patients with NGS data available.

In most cases (11/13), the ruxolitinib was associated with ongoing TKI. In all eight patients with available data, the dosage of the TKI and Ruxolitinib was lowered

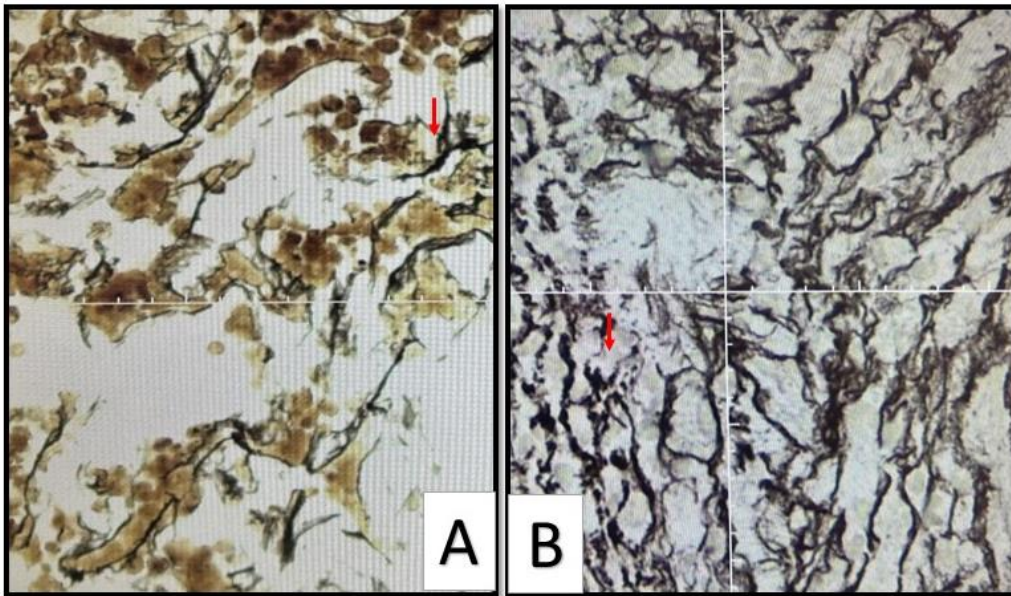


Figure 1

A: Bone marrow biopsy at diagnosis (2019) of simultaneous CML and early MF disease with grade 1 of fibrosis (staining with silver impregnation, 20x optical microscope)

B: Bone marrow biopsy after 4 years of tyrosine kinase inhibitor therapy (2023) showing predominant features of primary fibrosis in advanced phase with increase reticulin fibrosis of grade 3 (staining with silver impregnation, 20x optical microscope)

to manage the hematological toxicity. In particular, when both drugs were prescribed at full dosage, discontinuation was necessary (cases 2 and 12). On the other hand, when one of the two drugs was administered at a lowered dosage, an extra adjustment was required (cases 1,3,5,7,8). In our case, no more adjustment of dosage was necessary, probably because we initially prescribed a lower dose of both drugs. Out of the hematological toxicity, no other one was reported. Note that CML is rather easy to control; however, seven patients out of 13 on combination treatment underwent STC treatment in most cases because of the progression of myelofibrosis.

To date, kinase inhibitors are able to target the 2 driver kinases and to treat both MPNs are available, even if with different efficacy. Imatinib, the first TKI approved by the FDA in 2001, represents a milestone in CML therapy, and with the new-generation TKIs has revolutionized the treatment of CML patients, producing a molecular remission in most of case. Jak 1/JAK2 inhibitor Ruxolitinib is the first-in-class drug for molecular targeted therapy of intermediate and high-risk MF but with a modest effect on the evolution of the disease. Given the coexistence of two driver mutations in some patients and the availability of two target drugs, it is pivotal to understand the relative contribution of BCR-ABL1 and mutant JAK2/CALR in determining the clinicopathologic phenotype. In this regard, numerous prior reports have questioned the clonal composition of MPN harboring both Ph+ and Ph- driver mutations, with some studies favoring the presence of two independent clones and others supporting the hypothesis that the two

genetic events occur in the same clones.<sup>3,6</sup> It is clear from prior studies that each of these proposed theories is possible, but the presence of two independent clones seems to represent the more common event.<sup>2-5</sup> The clinical presentation of two genetic aberrations may vary, being CML and Ph-negative MPN alternatively detecting them first or during the treatment. To date, the current scientific literature reports fewer than a hundred cases with clinically relevant coexistence of dual MPNs<sup>2</sup> and shows that Ph+ CML seems to play a clinically dominant role compared with the co-expressed Ph-negative clone. Consequently, patients often received a TKI only. CML is rather easy to manage, with an overall good response to different types of TKIs in most patients; however, an opposite growth of Ph+ CML and Ph-MPN clones was often observed under TKI treatment. The control of Ph+ clone by TKI therapy could unmask the second Ph-negative MPN phenotype with a propensity to accelerate the fibrosis (the median latency is 5.4 years when CML preceding Ph-negative MPN vs 9 years when Ph-negative MPN preceding CML) and supports the theory that the two clones are not only independent and unrelated but could also compete with each other and provide a rationale for combination treatment.<sup>7-9</sup> Because of the rarity of the condition, standardized treatment for dual MPN has not been established. Our systematic review allowed to highlight 13 cases with co-occurrence of two driver mutations associated with clinically relevant MPNs and treated with a combination of both classes of drugs, TKI and Ruxolitinib. The use of “combination therapy” was demonstrated to be feasible and safe but required an

**Table 2.** Combination therapy of tyrosine kinase inhibitors and the Jak 2 inhibitor (Ruxolitinib) in patients with concurrent Jak2/Calr-positive Myeloproliferative disorder and Chronic Myelogenous Leukaemia (CML).

REFEREN CES			PATIENT	DIAGNOSIS *	TIME TO SECOND DIAGNOSIS	DRIVER MUTATIONS	KARYOTYPE or OTHER MUTATIONS	TKI	RUXO DOSAGE	DOSE ADJUSTMENT	TIME of TKI and RUXO ASSOCIATION	OUTCO
Iurlo A et al 2014 (4)			Case 1	PV evolved in post-PV MF and CML	19 years	Bcl-Abl1 and Jak 2- V6177F	Normal karyotype; NGS N.D.	Imatinib (400 mg/day)	15 mg BID	Reduction of Ruxo dosage at 10 mg and Imatinib at 300 mg for hematological toxicity (grade 3 anemia and grade 1 thrombocytopenia)	10 months	clinical
			Case 2	PV evolved in post-PV MF and CML	12 years	Bcl-Abl1 and Jak 2- V6177F	Normal karyotype; NGS N.D.	Imatinib (400 mg/day)	20 mg BID increased at 25 mg	discontinuation for hematological toxicity (grade 3 anemia and grade 3 thrombocytopenia)	2 months	alive in remissio
Zhou A et al 2015 (5)			Case 3	PV evolved in post-PV MF and CML	10 years	Bcl-Abl1 and Jak 2- V6177F	N.D.	Dasatinib (100 mg/die)	10 mg BID	Reduction of Ruxo dosage to 10 mg alternating with 5 mg	3 years	stable at combin
Kandarpa e al 2017 (7)			Case 4	post-PV MF and CML	2.5 years	Bcl-Abl1 and Jak 2- V6177F	None	Imatinib and Dasatinib	N.A.	N.A.	more than 1 year	clinical
			Case 5	CML and MF	2.5 years	Bcl-Abl1 and Jak 2- V6177F	NRAS, SRSF2, IDH2,EZH2, ASXL1	Nilotinib	N.A.	Alternating schedule of Nilotinib (4 days on/1 day off, then Ruxolitinib (1 days on/1 day off)	more than 1 year	clinical
Boddu P et al 2018 (8)			Case 6	MF and CML	2.5 years	Bcl-Abl1 and CALR	del (20q); NGS N.D.	Imatinib	N.A.	N.A.	2 months	alive in remissio
Sora F et al 2021 (11)			Case 7	CML and MF	6 months	Bcl-Abl1 and CALR	ASXL1 and ZRSR1	Nilotinib (600mg)	10 mg BID	Dose Reduction of Ruxo and Nilotinib for hematological toxicity	4 years	died afte progress (hepator requirer
Ryu J et al 2022 (12)			Case 8	MF and CML in accelerated- phase	7 years	Bcl-Abl1 and Jak 2- V6177F	t(12-19); NGS N.D.	Imatinib	N.A.	N.A.	1.5 months	Poor res
Zhao Y et al 2022 (9)			Case 9	MF and CML	4 years	Bcl-Abl1 and Jak 2- V6177F	der (14-21); NGS N.D.	Imatinib, switched to Nilotinib, Sunitinib, Ponatinib, Dasatinib,	N.A.	N.A.	N.A.	alive in remissio
			Case 10	MF and CML	5 years	Bcl-Abl1 and Jak 2- V6177F	47 XY,+8; NGS N.D.	Nilotinib	N.A.	N.A.	17	alive in remissio
			Case 11	CML and MF	1 years	Bcl-Abl1 and Jak 2- V6177F	N.D.	Nilotinib  Nilotinib	N.A.	N.A.	26 months	Poor cli and TK
Zhang Y. et al 2022 (10)			Case 12	ET evolved in post-ET MF and CML in	11 years	Bcl-Abl1 and Jak 2- V6177F	del (13); IDH1, IDH2,ASXL1, KRAS, RUNX1	Imatinib and Fumatinib	20 mg BID	Imatinib discontinued for toxicity	N.A.	Poor res eligible

				accelerated-phase								
Our case			Case 13	CML and early MF evolved in MF	concomitant	Bcl-Abl1 and Jak 2-V6177F	del(20)(q12); ETV6c.602T>C ETV6c.886G>A IDH1, ZRSR2	Dasatinib (50 mg/die)	15 mg BID	No more adjustment	13 months	alive in remission

\* The 1st disease listed is the first one diagnosed. BID: two times a day; CML: Chronic myeloid leukaemia; ET: Essential Thrombocythemia; N.A: no available; N.D. not done; NGS Next Generation Sequencing; PV: Polycythemia Vera; MF: Myelofibrosis; Ruxo: Ruxolitinib; SCT: stem cell transplant; TKI: tyrosine kinase inhibitor.

adjustment in the dosage of both drugs to control the hematological toxicity and avoid discontinuation. Moreover, although the TKI are very effective for CML, the jak1/jak2 inhibitors are not similarly active to target Ph- negative clone. Thus, although one component of the patient's disease may be adequately treated, the second genetic alteration may not be. In addition, at the time of the second MPN diagnosis, the cytogenetic analysis and NGS may often detect additional somatic mutations, which are associated with high genetic instability and predict poor survival due to MPN-Ph negative disease. Indeed, most of the patients treated by the two-drug association also received SCT due to anticipated poor survival associated with the

progression of myelofibrosis MPN-Ph negative disease.<sup>2,11</sup>

In conclusion, the data suggests that patients with concurrent Ph+ CML and Ph-MPN disease may have genetic instability and a tendency to develop progression of fibrosis with an unpredictable and poor outcome. The use of combination therapy with TKI and Ruxolitinib for the treatment of these patients is feasible and safe after a dosage adjustment of both drugs to avoid pharmacology toxicity. However, Ruxolitinib is effective to reduce the spleen volume but not to prevent the fibrosis progression therefore in association with TKI it could represent a possible bridge to allogeneic transplant.

---

Katia Paciaroni<sup>1</sup>, Selenia Campagna<sup>1</sup>, Nicoletta Villiva<sup>1</sup>, Enrico Maffini<sup>2</sup>, Francesca Celesti<sup>1</sup>, Attilio Tordi<sup>1</sup>, Mariangela Lombardi<sup>3</sup>, Giulia Dragonetti<sup>1</sup> and Tommaso Caravita di Toritto<sup>1</sup>.

<sup>1</sup> UOSD Ematologia, ASL RM1, Roma, Italy.

<sup>2</sup> IRCCS Azienda Ospedaliero-Universitaria di Bologna, Bologna, Italy.

<sup>3</sup> UOC di Anatomia Patologica, Ospedale S. Filippo Neri, Roma Italy.

**Competing interests:** The authors declare no conflict of Interest.

Correspondence to: Katia Paciaroni. UOSD Ematologia, ASL RM1, Roma, Italy. E-mail: [katia.paciaroni@aslroma1.it](mailto:katia.paciaroni@aslroma1.it)

---

## References:

1. Khoury J.D., Solary E., Abla O. et al. (2022) The 5th edition of the World Health Organization Classification of Haematolymphoid Tumours: Myeloid and Histiocytic/Dendritic Neoplasms. *Leukemia*; 36(7):1703-1719. <https://doi.org/10.1038/s41375-022-01613-1> PMID:35732831 PMCID:PMC9252913
2. Zanelli M., Bisagni A., Sanguedolce F. et al.(2023) Co-occurrence of JAK2-V617 F mutation and BCR::ABL1 translocation in chronic myeloproliferative neoplasms: a potentially confounding genetic combination. *Front oncol.*; 13: 01-14. <https://doi.org/10.3389/fonc.2023.1329298> PMID:38282677 PMCID:PMC10811046
3. Soderquist CR, Ewalt MD, Czuchlewski DR, et al. (2018) Myeloproliferative neoplasms with concurrent BCR-ABL1 translocation and JAK2V617F mutation: a multi-institutional study from the bone marrow pathology group. *Modern Pathology* 31(5):690-704. <https://doi.org/10.1038/modpathol.2017.182> PMID:29327708 PMCID:PMC6008160
4. Iurdo A., Gianelli U., Rapezzi D et al. (2014) Imatinib and Roxilitinib association: first experience in two patients. *Haematologica*: 99: e76-77 <https://doi.org/10.3324/haematol.2013.102525> PMID:24633869 PMCID:PMC4040897
5. Zhou A, Knoche EM, Engle EK, Fisher DAC and Oh ST (2015) Concomitant JAK2V617F positive polycythemia vera and BCR-ABL-positive chronic myelogenous leukemia treated with ruxolitinib and dasatinib. *Blood Cancer J* 5:e351. <https://doi.org/10.1038/bcj.2015.77> PMID:26430722 PMCID:PMC4635189
6. Bader G. and Dreiling B. (2019) Concurrent Jak2-Positive Myeloproliferative disorder and Chronic myelogenous leukaemia: a novel entity? A case report with review of the literature. *Journal of Investigative medicine*: vol 7: 1-5. <https://doi.org/10.1177/2324709619832322> PMID:30803277 PMCID:PMC6393948
7. Kandarpa M, Wu YM, Robinson D et al. (2017) Clinical characteristics and whole exome/transcriptome sequencing of coexisting chronic myeloid leukemia and myelofibrosis. *AJH* 92:555-61. <https://doi.org/10.1002/ajh.24728> PMID:28335073
8. Boddu P, Chihara D, Masarova L. , Pemmaraju N., Patel KP and Verstovsek S. (2018) The co-occurrence of driver mutations in chronic myeloproliferative neoplasms. *Ann Hematol*; 97 (11):2071-2080. <https://doi.org/10.1007/s00277-018-3402-x> PMID:29951914
9. Zhao Y, Reddi D, McCracken J, et al. (2022) Sequential development of JAK2V617F mutation and BCR-ABL1 fusion in individual patients with myeloproliferative neoplasms. A linear clonal evolution or parallel clonal competition? *Arch Pathol Lab Med* 146:710-7. <https://doi.org/10.5858/arpa.2021-0096-OA> PMID:34506622
10. Zhang Y, Bi H, Wang Y, Chen L, et al. (2022) BCR-ABL1 is a secondary event after JAK2V617F in a patient with essential thrombocythemia who develop chronic myeloid leukemia. *Blood Sci* 4:199-204. <https://doi.org/10.1097/BS9.0000000000000129> PMID:36518237 PMCID:PMC9742103
11. Sorà F, Chiusolo P, Autore F, et al. (2021) Is allogeneic transplantation an option in patients affected by concurrent myelofibrosis and chronic myeloid leukemia (CML)? *Mediterr J Hematol Infect Dis* 13(1): e2021062. <https://doi.org/10.4084/MJHID.2021.062> PMID:34804436 PMCID:PMC8577550
12. Ryu J, Chu D, Park B, et al. (2022) Rare case of accelerated-phase chronic myeloid leukemia diagnosed during treatment for JAK2 V617F-positive primary myelofibrosis. *Lab Med* 53:e140-4. <https://doi.org/10.1093/labmed/lmac011> PMID:35243502